

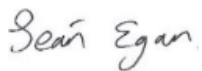
Message from the Head teacher:

Dear Parents and Carers

As we approach half-term, we're excited to continue offering a variety of engaging activities for our students, including swimming, horse riding, and wellbeing walks. These opportunities provide a wonderful chance for students to stay active and enhance their wellbeing.

We continue to develop our curriculum, at the core of our curriculum are communication, wellbeing, and emotional regulation. These Core principles will give our students the skills they need to thrive and prepare for the future. This is ongoing work, and all our teachers will be attending collaborative planning days with other staff from the Lime Trust.

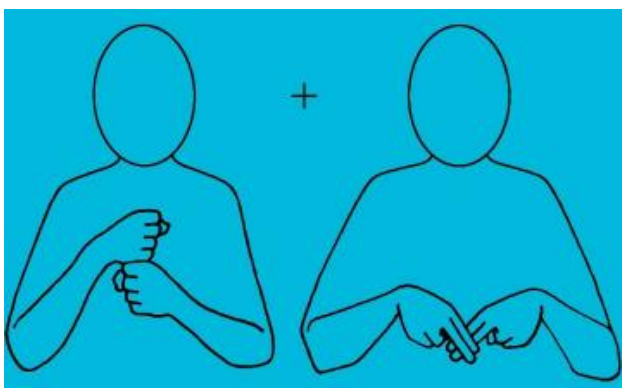
Warm regards,



Sean Egan

Head Teacher

Makaton theme for this term is people, this week's sign is - Granddad



You tube link for - [Grandad](#)

SCHOOL CALENDAR



Last day of term 14th Feb 25

Return to school 24th Feb 25

Internet Safety workshop 26th Feb @ 9.15 – William Morris

This Week's Top Attendance

Whole School Attendance

(Average this year)

83.7%

Attendance Congratulations

Classes with above 90% attendance

(WM) Hawking – 96.3%

(WM) Fotheringham –95.8%

(WM) Fox – 95.6%

(WM) Charles – 94.1%

(BH) Ruby – 92.9%

(WM) Pearson – 92.2%

(BH) Red –92.0%

(WM) Mandela – 90.9%

(BH) Rose – 90.2%

(BH) Blue - 90.0%



Privacy Notice: Lime Trust takes the privacy of pupils/parents data very seriously, therefore we would just like to remind parents that you can view/read our privacy notices on the [Trust](#) website.

Learning @ BH - Pink Class

This past week, Pink class have enjoyed Literacy week. We have enjoyed our Pink Class Space Adventure. Exploring the sensory story and the rocket for us to help others get back to space. We enjoyed our sensory tray of trying to find the shooting stars in the space loop.



We have also enjoyed our fine motor skills sessions with our space place mats, we made good choices for what colour we wanted to use and amazing rolling, pinching and squeezing.



Privacy Notice: Lime Trust takes the privacy of pupils/parents data very seriously, therefore we would just like to remind parents that you can view/read our privacy notices on the [Trust](#) website.

Learning @ WM

WMS celebrated Children's Mental Health Week! Each pathway had a different task to complete in links with the theme "Know yourself, grow yourself".

Fuji-Explore had an emotions carousel, where each class focused on a task linked with one emotion i.e. anger - red. Worried - they made stress putty balls.

Fuji- Challenge planted some self-esteem plants - They had to write what they would like to improve or grow within themselves onto some plant sticks and then water it every day.

Everest - Explored scenarios through drama and meditation.



We held an assembly for all pathways and discussed what mental health means to us. It was a successful event with everyone involved!

Clothing and Toy Bank @ BH

Dear, parents and carers,

I would like to incorporate a clothing/toy bank at our coffee mornings, as our children grow so quickly, it would be lovely to be able to bring outgrown clothes in good condition, and grab something for your little ones whilst having a cuppa and a chat!

This service is also for parents, so any clothing items you no longer wear that are in good condition, bring them in!

Please, if you have any donations, to bring them to reception and give to Charlee, I will send out our first clothing/toy bank coffee morning in due course.

Thank you so much.

Charlee

Family Support Officer



As you may already be aware, Lime Trust has been running its own **Teacher Training programme** with Ambition Institute from September 2024. If you are considering training to be a primary teacher and would like to join our September 2025 cohort.

If you are ready to apply and meet the eligibility requirements, please use the following link: <https://www2.ambition.org.uk/l/330231/2023-06-20/twm4v>

For any additional information, please email traintoteach@limetrust.org or contact Michaela Philpot on 020 4548 1732.

School Uniform

Please make sure that your child is wearing the correct uniform. Could you also make sure that your child's name is labelled clearly on the clothing.

Thank you for your support.

Link to: [My Clothing](#)

Excellent Trustpilot

Welcome to MyClothing

We're the UK's largest provider of embroidered school uniform. Search our database of over 7,500 schools.

Privacy Notice: Lime Trust takes the privacy of pupils/parents data very seriously, therefore we would just like to remind parents that you can view/read our privacy notices on the [Trust](#) website.

Valentine's Day fun @ WM

Celebrate Valentine's Day at Lime Academy Hornbeam



WHEN - Friday 14th February 2025

HOW - Wear something RED



Buy treats at our delicious Bake Sale



Parents are invited to attend
with their respective pathways.

9am - 9:30am Fuji Explore

9:30am - 10am Fuji Challenge

10 - 10:30am Everest

Take part in our festive Disco at 2PM.

(students only)



Privacy Notice: Lime Trust takes the privacy of pupils/parents data very seriously, therefore we would just like to remind parents that you can view/read our privacy notices on the [Trust](#) website.

SEND Specialist Practitioner Drop-in Clinics –

10th March – 9.30 -11.00 @ WM 2.00-3.30 @ BH

Please call school office to book a 15-minute appointment

Waltham Forest
0-19 School Health

SEND Specialist Practitioner Drop-in Clinics

We offer public health interventions, confidential support and advice for your child around (but not limited to)...

- Healthy eating and lifestyles
- Hygiene
- Weight
- Dental health
- Healthy sleep
- Immunisations
- Toileting
- Behaviours
- Puberty
- Emotional and Wellbeing
- Drugs alcohol and smoking
- Sexual health and relationships
- ...or just a chat

Drop-in clinics during the school year

- One per half term
- Usually on a Monday
- Time: 9.30am-11am or 2pm - 3.30pm

How to contact us
Email: thgpcg.wf0-19sendspecialistservice@nhs.net
Call Single Point of Access (SPA): 0300 033 6200
Email SPA: thgpcg.wf0-19spa1@nhs.net

If we cannot help, we will find someone who can.
We also refer and signpost to specialist services.

Website: www.gpcaregroup.org | Social media: @THGPCareGroup

September 2024

Privacy Notice: Lime Trust takes the privacy of pupils/parents data very seriously, therefore we would just like to remind parents that you can view/read our privacy notices on the [Trust](#) website.

Waltham Forest Sexual Health Half Term Drop In

The Sexual Health Team will be offering Drop ins on the following days:

Monday 17th February 3pm - 5pm

Leytonstone Family Hub, 2-8 Cathall Road E11 4LF

Tuesday 18th February 12pm - 2pm

Chingford Family Hub, 5 Oaks Grove, E4 6EY

Wednesday 19th February

Queens Road Family Hub, Queens Road E17 8PJ - 9am - 11am
Walthamstow Family Hub, 313 Billet Road, E17 5PX 12pm - 2pm

Wednesday 19th February 17.30pm - 19pm

Town Hall, Forest Road, E17 4JF

Thursday 20th February

Walthamstow Library, E17 7JN - 10am - 12pm
Limetree Surgery, High Road Leytonstone E11 4JT - 4pm - 6pm

Free Sexual health tests, C-Card, clinic appointment support, general contraceptive advice and pregnancy testing.

No appointment needed; all ages welcome.

Come along and meet the team and receive a free gift with every test!



Privacy Notice: Lime Trust takes the privacy of pupils/parents data very seriously, therefore we would just like to remind parents that you can view/read our privacy notices on the [Trust](#) website.