

Message from the Head teacher:

Happy New Year and Welcome Back,

We hope everyone had a restful break and is ready to launch into an exciting new term! It has been lovely welcoming the learners back into school. This term, our new curriculum topic is Space! Our learners will be embarking on a sensory journey through the wonders of the universe, exploring the mysteries of distant planets, the sounds and sights of the cosmos, and the feel of space exploration through hands-on experiences. From creating models of the solar system to investigating space through sight, sound, and touch, we will be igniting curiosity, fostering communication, and encouraging collaboration.

We will be launching our topic at Brookfield House on Friday with a carousel of sensory-rich activities, at William Morris learners will be introduced to their topic during subjects using a cross curricular approach.

I hope that 2025 is a year of development and personal achievement for all.

Let's reach for the stars together!

Sam Chaplin

Deputy head teacher

Makaton theme for this term is people, this week's sign is - Mum



You tube link for - [Mum](#)

Privacy Notice: Lime Trust takes the privacy of pupils/parents data very seriously, therefore we would just like to remind parents that you can view/read our privacy notices on the [Trust](#) website.

SCHOOL CALENDAR



Last day of term 14th Feb 25

Return to school 24th Feb 25

This Week's Top Attendance

Whole School Attendance (Average this year)

85.6%

Attendance Congratulations

Classes with above 90% attendance

(WM) Fox – 97.0%

(WM) Hawking – 95.7%

(WM) Fotheringham – 94.9%

(WM) Charles – 94.6%

(WM) Pearson – 93.4%

(BH) Blue – 92.2%

(WM) Mandela – 92.2%

(BH) Red – 92.2%

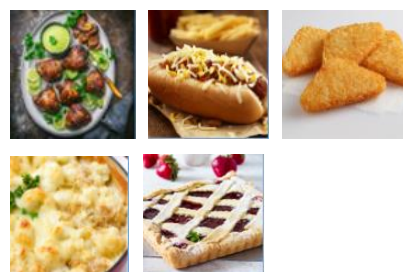
(BH) Ruby – 91.5%

(BH) Rose – 91.2%

(WM) Wonder – 90.5%

(WM) Watson – 90.3%

Special lunch time menu 16th Jan 25 – Flavours of the World



More information below, please call school office if your child would like to try school lunch. £2.50 per day.

Learning @ BH – Maroon Class

Learners in Maroon Class had a fantastic time crafting and painting Christmas tree decorations, which were a huge success at our class stall during the Christmas market. The process began with rolling out white clay. Once the clay was evenly rolled, the learners used festive biscuit cutters to shape the decorations into stars and snowmen. After cutting out the shapes, we set the decorations aside to dry for a couple of days, allowing the clay to harden and become ready for painting. When the decorations were fully dried, the learners painted them using an array of colours, adding glitter to make each piece unique.



We are incredibly proud to share that all the decorations were sold, a testament to the hard work and creativity of our learners.

Learning @ WM – Jordan Class

This term, our learners have been working hard to strengthen their fine motor skills through engaging, practical activities. One of the key tasks has been learning to tie shoelaces, an essential life skill that fosters both independence and self-confidence.

To support this, we have been using a step-by-step approach, breaking the process down into manageable stages. Learners have practised using various techniques, including working with shoelace boards and practising on their own shoes. They are showing fantastic perseverance and growing in confidence as they master this skill.



It's wonderful to see the pride on their faces when they succeed. These moments highlight the importance of providing learners with opportunities to develop practical skills that they can use in their everyday lives. We look forward to seeing their continued progress!

Privacy Notice: Lime Trust takes the privacy of pupils/parents data very seriously, therefore we would just like to remind parents that you can view/read our privacy notices on the [Trust](#) website.

Some Kind of Hack Space

'Some Kind of Hack Space'

A space for autonomous creative exploration with technology

For neurodiverse young people age 14-25

What is 'Some Kind of Hack Space'?

Some Kind of Hack Space is a project space for neurodiverse young people to experiment, test out creative ideas, and meet up.

A relaxed supportive environment in which neurodiverse young people can explore their own creative ideas supported by regular staff and visiting creative practitioners with expertise in neurodivergent conditions and youth work.

Visiting artists, designers and scientists will bring a variety of creative workshops and activities to each session.

You can bring your own projects to get on with. You might for example want to code, edit film, animate, draw, knit, write music...just let us know what you're thinking of doing in the sign-up form. You will have access to some equipment, computers and drawing materials.

Artists and technicians are available to assist you with your projects if you need them. They have lots of skills they can share with you including coding and electronics, making music, animation, filmmaking, using a camera, fabric construction and mathematical origami! **Please follow link below for more information**

[For more information](#)

Where is it?

- Leyton Sixth Form College, Essex Road, Leyton, London, E10 6EQ

Other Stuff

- It's free
- Parents, carers and siblings are welcome to come along and support you, join in the activities, have a cuppa with other parents in the foyer, or drop you off for the day. Whatever suits you.
- We will have some snacks, but do bring your own food and drinks

Privacy Notice: Lime Trust takes the privacy of pupils/parents data very seriously, therefore we would just like to remind parents that you can view/read our privacy notices on the [Trust](#) website.



As you may already be aware, Lime Trust has been running its own **Teacher Training programme** with Ambition Institute from September 2024. If you are considering training to be a primary teacher and would like to join our September 2025 cohort.

If you are ready to apply and meet the eligibility requirements, please use the following link: <https://www2.ambition.org.uk/l/330231/2023-06-20/twm4v>

For any additional information, please email traintoteach@limetrust.org or contact Michaela Philpot on 020 4548 1732.

School Uniform

Please make sure that your child is wearing the correct uniform. Could you also make sure that your child's name is labelled clearly on the clothing.

Thank you for your support.

Excellent Trustpilot

Welcome to MyClothing

We're the UK's largest provider of embroidered school uniform. Search our database of over 7,500 schools.

Annual Review Meetings

Please can parents inform the school in advance if you are unable to attend your schedule Annual Review Meeting.



Menu

16/01/2025

Flavours of the world



Pollo a la brasa (Barbecued chicken) (Peru)

Chicken marinated in soy sauce, paprika, oregano and herbs cooked on a grill.



American hot dog with Quorn chilli

Vegetarian hot dog topped with Quorn chilli and vegan cheese (U.S.A.)



Hash brown potatoes

Grated potatoes seasoned and cooked in a triangle shape (United Kingdom)



Cauliflower gratin

Tender cauliflower florets coated in a cheese white sauce topped with cheddar and baked in the oven (France)



Crostata alla marmellata di fragole (Strawberry tart) (Italy)

Sweet pastry topped with strawberry jam, decorated with pastry ribbons and baked in the oven.



Privacy Notice: Lime Trust takes the privacy of pupils/parents data very seriously, therefore we would just like to remind parents that you can view/read our privacy notices on the [Trust](#) website.

SEND Specialist Practitioner Drop-in Clinics –

20th Jan 25 – 9.30 -11.00 @ BH

2.00-3.30 @ WM

Please call school office to book a 15-minute appointment

Waltham Forest
0-19 School Health

SEND Specialist Practitioner Drop-in Clinics

We offer public health interventions, confidential support and advice for your child around (but not limited to)...

- Healthy eating and lifestyles
- Hygiene
- Weight
- Dental health
- Healthy sleep
- Immunisations
- Toileting
- Behaviours
- Puberty
- Emotional and Wellbeing
- Drugs alcohol and smoking
- Sexual health and relationships
- ...or just a chat

Drop-in clinics during the school year

- One per half term
- Usually on a Monday
- Time: 9.30am-11am or 2pm - 3.30pm

How to contact us
Email: thgpcg.WF0-19sendspecialistservice@nhs.net
Call Single Point of Access (SPA): 0300 033 6200
Email SPA: thgpcg.wf0-19spa1@nhs.net

If we cannot help, we will find someone who can.
We also refer and signpost to specialist services.

Website: www.gpcaregroup.org | Social media: @THGPCareGroup

September 2024

Privacy Notice: Lime Trust takes the privacy of pupils/parents data very seriously, therefore we would just like to remind parents that you can view/read our privacy notices on the [Trust](#) website.