

Message from the Head teacher:

Dear Parents & Carers,

It was great to see so many of you at 'Meet the teacher' this week, the opportunity to talk about the learners with you, really helps everyone have the best possible start to the academic year.

Over the summer many of us may have enjoyed both the Olympics and Paralympics. Seeing individuals achieve in sport reminds us of the determination, persistence and willingness to grow many of our learners demonstrate every day. Did you know that Waltham Forest has a directory of inclusive sports that run across the borough?

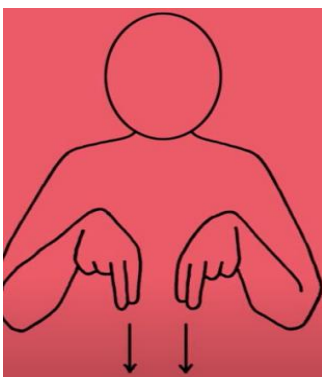
<https://www.walthamforest.gov.uk/schools-education-and-learning/local-offer-special-educational-needs-and-disability-send/things-do/z-accessible-sports>

As a school we will also be expanding the opportunities our learners have to be involved in sporting opportunities within the borough.

Have a great weekend,

Samantha

Makaton theme for this term will be animals - Dog



You tube link for - [DOG](#)

SCHOOL CALENDAR



17th Oct 24 Coffee Morning @ BH

18th Oct 24 Last day of Term

This Week's Top Attendance

Whole School Attendance

(Average this year)

85.1%

Attendance Congratulations

Classes with above 90% attendance

(BH) Fotheringham – 99%

(WM) Watson – 98.1%

(WM) Ruby – 96.6%

(BH) Hawking – 96.1%

(WM) Rose – 95.9%

(WM) Fox – 94.3%

(WM) Pearson – 94.2%

(WM) Mandela – 93.8%

(WM) Angelou – 91.9%

(WM) Blue – 91.2%

(WM) Charles – 90.9%

(WM) Doyne – 90.8%

(WM) Goldberg – 90.5%

Privacy Notice: Lime Trust takes the privacy of pupils/parents data very seriously, therefore we would just like to remind parents that you can view/read our privacy notices on the [Trust](#) website.

Learning @ BH – Bronze Class

With the second week of school ending and autumn around the corner, Bronze Class have been exploring the season through a range of activities. During Numeracy sessions learners focused on the concept of number exploration and counting. Learners engaged in hands-on activities, such as counting apples, matching leaves, assembling pumpkin puzzles, and searching for numbers in natural materials.



Throughout these sessions, the class worked on developing essential skills like communication, peer and staff interactions, and independent task completion.

Privacy Notice: Lime Trust takes the privacy of pupils/parents data very seriously, therefore we would just like to remind parents that you can view/read our privacy notices on the [Trust](#) website.

Some Kind of Hack Space

'Some Kind of Hack Space'

A space for autonomous creative exploration with technology

For neurodiverse young people age 14-25

What is 'Some Kind of Hack Space'?

Some Kind of Hack Space is a project space for neurodiverse young people to experiment, test out creative ideas, and meet up.

A relaxed supportive environment in which neurodiverse young people can explore their own creative ideas supported by regular staff and visiting creative practitioners with expertise in neurodivergent conditions and youth work.

Visiting artists, designers and scientists will bring a variety of creative workshops and activities to each session.

You can bring your own projects to get on with. You might for example want to code, edit film, animate, draw, knit, write music...just let us know what you're thinking of doing in the sign-up form. You will have access to some equipment, computers and drawing materials.

Artists and technicians are available to assist you with your projects if you need them. They have lots of skills they can share with you including coding and electronics, making music, animation, filmmaking, using a camera, fabric construction and mathematical origami! **Please follow link below for more information**

[For more information](#)

Where is it?

- Leyton Sixth Form College, Essex Road, Leyton, London, E10 6EQ

Other Stuff

- It's free
- Parents, carers and siblings are welcome to come along and support you, join in the activities, have a cuppa with other parents in the foyer, or drop you off for the day. Whatever suits you.
- We will have some snacks, but do bring your own food and drinks

Coffee Mornings

17th October 9.30 – 10.30 @ BH School

14th November 9.30 – 10.30 @ BH School

12th December 9.30 – 10.30 @ BH School

Dates for WM to be confirmed.



Sensory Explorers at Walthamstow Wetlands



Walthamstow Wetlands are running a new session one Sunday a month, Sensory Explorers, which involves using our senses to connect with nature.

Sessions are for families with children with additional needs and/or a disability. Full details including booking links and dates can be found using the link.

[Sensory Explorers at Walthamstow Wetland](#)

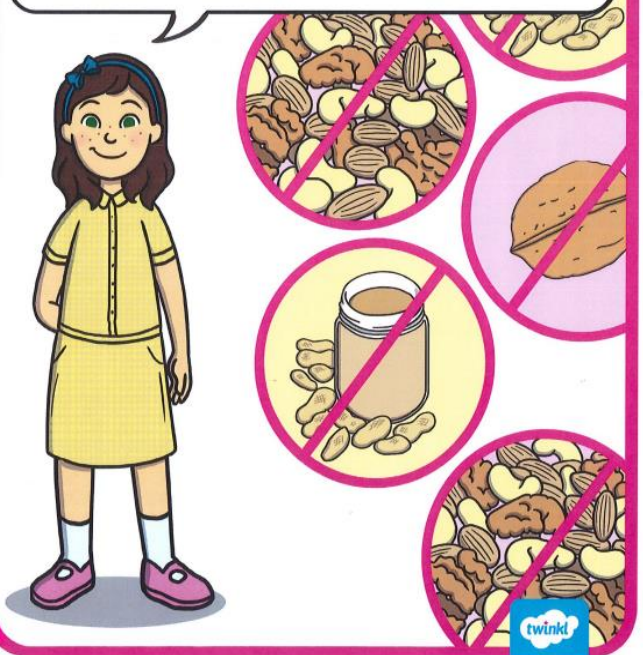
Polite reminder

This is just a polite reminder that we are a nut and sesame seed free school. Although, sesame seeds are classified as seeds and not nuts, the proteins in sesame seeds may resemble proteins in certain nuts and may trigger an allergic reaction in children who have a nut allergy. Please be mindful of what food you send into our school.

Thank you.

We are a nut-free school.

Please do not bring in any products containing nuts or sesame seeds!



Privacy Notice: Lime Trust takes the privacy of pupils/parents data very seriously, therefore we would just like to remind parents that you can view/read our privacy notices on the [Trust](#) website.



THE ROOTS

Empowering young minds



Is your child struggling to go to school ?



Join one of our free workshop for parents to help your child attend school with confidence.

Scan the QR code to book a place and find out more

Join us at

Leyton Family Hub, 215 Queens Road, E17 8PJ

- 19 September 2024 - 9.30am - 11.30am
- Or

Walthamstow Library, High Street, E17 7JN

- 27 September 2024 - 9.30am - 11.30am
- 29 November 2024 - 9.30am - 11.30am



Privacy Notice: Lime Trust takes the privacy of pupils/parents data very seriously, therefore we would just like to remind parents that you can view/read our privacy notices on the [Trust](#) website.

THE ROOTS

Empowering young minds

Up to 10% of children experience anxiety or distress about going to school.



Our workshop aims to support you to help your child re-engage with school.

What the workshop covers:

- Why children may struggle to attend school
- Strategies for overcoming anxiety about school
- Self-care and connecting with school
- Action planning to help take steps forward.

Who are we?

The Roots was established in partnership with Waltham Forest Council in 2024. We are a team of specialist clinicians who support young people and their families with common wellbeing and mental health challenges.

Visit our website or email us directly to find out more about The Roots service and our support for families & young people:

Roots@groundwork.org.uk
TheRootsLondon.co.uk





Privacy Notice: Lime Trust takes the privacy of pupils/parents data very seriously, therefore we would just like to remind parents that you can view/read our privacy notices on the [Trust](#) website.


Santa's Grotto

at Northfields Nursery,
Chingford E4 7RG

EVERY WEEKEND FROM
SATURDAY 23 NOVEMBER TO
SUNDAY 22 DECEMBER 2024

 Magical walkthrough experience

 Visit with Santa including a gift

 Festive activities

Tickets
£15

Pre-bookings only
Scan the QR code to book



havenhouse.org.uk/grotto



Charity no. 1044296


Northfields
SCHOOL & NURSERY
CHINGFORD, ESSEX

Supporting

HAVEN
HOUSE
children's hospice

Privacy Notice: Lime Trust takes the privacy of pupils/parents data very seriously, therefore we would just like to remind parents that you can view/read our privacy notices on the [Trust](#) website.