

Message from the Head teacher:

Dear Parents and Carers,

As we progress through the second half of the summer term, and we edge closer to the end of the academic year we continue to have a number of educational visits being undertaken, and in school celebrations. This includes the farm that is visiting Brookfield House, allowing learners to experience and interact with a variety of animals. At William Morris the art exhibition is a fantastic opportunity to celebrate the creative arts pieces of work produced by learners.

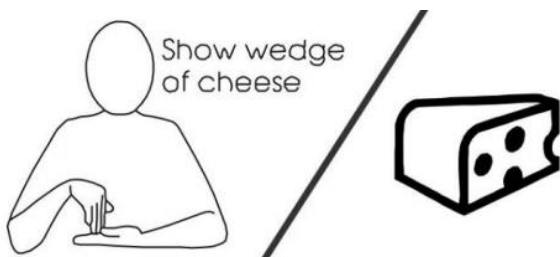
Both sites also have sports day to look forward to. This allows the celebration of teamwork, cohesion and progression of personalised physical skills. – Brookfield House: 12/07/24, William Morris: 17/07/24.

As well as transition day which prepares learners for the next stage of their school journey. On this day learners will spend time in their news classes for the upcoming academic year, meet their new class teams, and engage in activities designed to make this transition as smooth as possible. - 03/07/24 – Further information regarding the day will follow.

Wishing you all an enjoyable weekend

Laura Blatter

Makaton Sign of the week - Cheese



Link to you tube sign - [Cheese](#)

SCHOOL CALENDAR



27 th June 24	Coffee Morning @ BH And WM
3 rd July 24	Transition Day
4 th July 24	School Closed
12 th July 24	Sports Day @ BH
13 th July 24	Summer Fair @ WM
17 th July 24	Sports day @ WM
19 th July 24	Last day of term

This Week's Top Attendance

Whole School Attendance (Average this year)

86.6%

Attendance Congratulations

Classes with above 90% attendance

(WM) Charles – 97.1%

(WM) Fortheringham – 95.1%

(WM) Capaldi – 93.7%

(WM) Wonder - 92.9%

(BH) Lilac – 92.7%

(BH) Bronze – 92.4%

(BH) Blue – 92.3%

(WM) Fox – 92.1%

(WM) Goldberg – 91.7%

(BH) Gold – 91.7%

(WM) Pearson – 91.7%

(BH) Maroon – 91.4%

(WM) Adepitan – 91.4%

(BH) Ruby – 90.0%

Privacy Notice: Lime Trust takes the privacy of pupils/parents data very seriously, therefore we would just like to remind parents that you can view/read our privacy notices on the [Trust](#) website.

Learning @ BH – Lilac Class

Lilac Class have been experiencing outdoor learning in the sensory garden this week. During our 'Me and My Community' sessions, we have been learning about plants and growth. In the garden we have been exploring different plants and their features such as leaves branches and even some of the animals that live on them such as birds and insects.



We have been using our senses to feel closer to nature by listening to the breeze and bird song, smelling the fresh air and considering how this makes us feel. The learners have enjoyed exploring the garden and using the different equipment available.



Sports Day – 12th July @ BH/15th July @WM.

More information to follow.



Learning @ WM- Reeve Class

Reeve class have been working hard towards different methods of counting like using cubes to add and subtract numbers and using number lines to add on, students enjoy the sessions of Lego therapy to support communication, following instructions.



For part of our life skills, we decided to go to the cafe and allow the students to order their own food and pay for it, we also allowed them to make their own hot drinks with supervision in class. They were then able to understand the safety awareness around hot food and water.



Privacy Notice: Lime Trust takes the privacy of pupils/parents data very seriously, therefore we would just like to remind parents that you can view/read our privacy notices on the [Trust](#) website.

Coffee Morning @ BH and WM

You are invited!

This will be a chance to get to know other parents and some of the staff at BH & WM.

We will be inviting speakers from outside agencies to have a chat as well.

Thursday 27th June:

9-10 am @ BH

9.30 – 10.30 @ WM

Please do get in touch if you have anyone in mind you would like to hear from at a coffee morning.

Please confirm your attendance by email.

Thank you.

Polite reminder

This is just a polite reminder that we are a nut and sesame seed free school. Although, sesame seeds are classified as seeds and not nuts, the proteins in sesame seeds may resemble proteins in certain nuts and may trigger an allergic reaction in children who have a nut allergy. Please be mindful of what food you send into our school.

Thank you.



Privacy Notice: Lime Trust takes the privacy of pupils/parents data very seriously, therefore we would just like to remind parents that you can view/read our privacy notices on the [Trust](#) website.

'Some Kind of Hack Space'

A space for autonomous creative exploration with technology

For neurodiverse young people age 14-25

What is 'Some Kind of Hack Space'?

Some Kind of Hack Space is a project space for neurodiverse young people to experiment, test out creative ideas, and meet up.

A relaxed supportive environment in which neurodiverse young people can explore their own creative ideas supported by regular staff and visiting creative practitioners with expertise in neurodivergent conditions and youth work.

Visiting artists, designers and scientists will bring a variety of creative workshops and activities to each session.

You can bring your own projects to get on with. You might for example want to code, edit film, animate, draw, knit, write music...just let us know what you're thinking of doing in the sign-up form. You will have access to some equipment, computers and drawing materials.

Artists and technicians are available to assist you with your projects if you need them. They have lots of skills they can share with you including coding and electronics, making music, animation, filmmaking, using a camera, fabric construction and mathematical origami! **Please follow link below for more information.**

[For more Information](#)

Where is it?

- Leyton Sixth Form College, Essex Road, Leyton, London, E10 6EQ

Other Stuff

- It's free
- Parents, carers and siblings are welcome to come along and support you, join in the activities, have a cuppa with other parents in the foyer, or drop you off for the day. Whatever suits you.
- We will have some snacks, but do bring your own food and drinks



SUPER STAR SPORT

FOOTBALL CRICKET WATER FUN HOCKEY ARCHERY

SUMMER ACTIVITY

Holiday Camp

Snaresbrook Primary School
 Meadow Walk, South Woodford, E18 2EN

24th July - 16th Aug
 Full Day: 9AM - 3PM
 Half Day: 9AM - 12:45PM

HALF DAY:
 £14 PER DAY

FULL DAY:
 £25 PER DAY

To book visit:   
www.superstarsport.co.uk
 Email us: Info@superstarsport.co.uk
 Contact us: 01992 766 707
There is a 4.5% platform fee



Privacy Notice: Lime Trust takes the privacy of pupils/parents data very seriously, therefore we would just like to remind parents that you can view/read our privacy notices on the [Trust](#) website.

Calling All
Parents &
Carers!

We Need Your Help!

Lime Academy Hornbeam Summer Fair — Saturday 13th July 2024

We're busy planning a **fantastic summer fair** and we're looking for volunteers to help out on the day.

We're also seeking anyone with a special talent that might be useful for activities at the fair:

- Face painting / henna tattooing
- Baking / cooking
- Sports / football coaching
- Anything else that might be useful

All money raised on the day will be used to **improve the school** for all our young learners. To get involved please contact us via email at: williammorrispta@gmail.com



scan to email

Friends
of
William
Morris

Privacy Notice: Lime Trust takes the privacy of pupils/parents data very seriously, therefore we would just like to remind parents that you can view/read our privacy notices on the [Trust](#) website.



Help your child grow and thrive! Family Learning



Our family learning programme delivers a variety of courses, workshops and events both in person, online and at different venues in Waltham Forest - courses and workshops are free for families.

List of upcoming courses / workshops

Course code	Course Title	Venue	Date	Time	Day
FA0267C4	Raising Resilient and Confident children	Online	11.05.2024 – 25.08.2024	19:30 pm – 21:00 pm	Tuesday
FA0347F1	Calm Parents, Calm Children - Parenting	Leyton Family Hub	12.06.2024 - 10.07.2024	10:00 <u>am</u> - 12:00 pm	Wednesday
FA0368F1	Decorate a <u>Father's day</u> cake topper	Queens Road, Learning Centre	15.06.2024	10:00 <u>am</u> - 12:00 pm	Saturday
FA0243C4	Summer Cards workshop	North Chingford Library	22.06.2024	10:00 <u>am</u> - 12:00 pm	Saturday
FA0351F1	Monthly art club Great Big Green Week	Queens Road Learning Centre	22.06.2024	10:00 <u>am</u> - 12:00 pm	Saturday
FA0290C5	Supporting your Child transition from Nursery to Primary school	Queens Road Learning Centre	26/06/2024 – 03/07/2024	10:00 <u>am</u> - 12:00 pm	Wednesday
FA0367F1	E safety for Parents	Online	03/07/2024	7:30 pm – 9:00 pm	Wednesday
If you have any questions regarding family learning activities, please contact - cherie.cowan-smith@walthamforest.gov.uk Curriculum Manager Family Learning					

Enrol now through our website - www.lbwfadultlearning.co.uk
For more information email adult.learning@walthamforest.gov.uk



Privacy Notice: Lime Trust takes the privacy of pupils/parents data very seriously, therefore we would just like to remind parents that you can view/read our privacy notices on the [Trust](#) website.