

Message from the Head teacher:

Dear Parents/Carers,

As we approach the Easter holidays, I wish all families a peaceful and restful break.

Hornbeam was visited by Challenge Partners who are a quality assurance review team of specialist leaders from across the country. The report was extremely positive about the work we are all doing at Hornbeam.

The report quoted "Leadership has a shared vision with high aspirations for all learners and clearly have a fusion of skills that complement each other. Senior leaders are reflective practitioners and know the school well. They are open about improvement areas and have clear routes to introducing and embedding projects. They have introduced several new initiatives to improve the offer that pupil's access at the school."

As a School we are building upon feedback to improve outcomes for all pupils.

Have a lovely holiday.

Sean Egan

Sean Egan
Head Teacher



SCHOOL CALENDAR

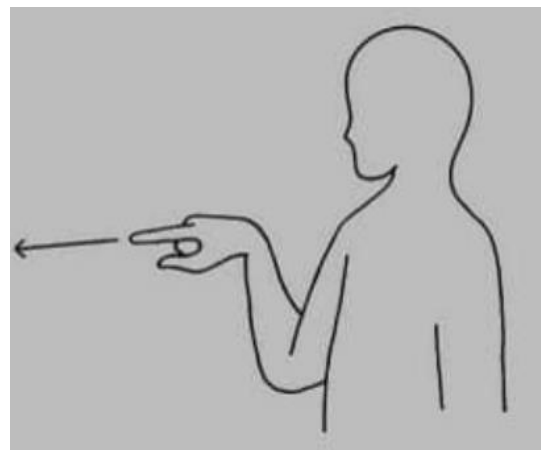


27th March Last day of Term

15th April Return to school

Makaton Sign of the Week – To Go

This week's Makaton Sign is: [To go](#)



Holy Month of Ramadan

March and April is a special time for many of our Muslim families with the Holy Month of Ramadan. Ramadan started at the weekend and ends around Tuesday 9th April 2024 (depending on the full moon).



Privacy Notice: Lime Trust takes the privacy of pupils/parents data very seriously, therefore we would just like to remind parents that you can view/read our privacy notices on the [Trust](#) website.

This Week's Top Attendance

Whole School Attendance

(Average this year)

84.8%

Attendance Congratulations

Classes with above 90% attendance

- (WM) Charles – 97.3%
- (WM) Fotheringham – 94.3%
- (WM) Mandela – 94.2%
- (WM) Adenitan – 93.6%
- (WM) Capaldi – 93.4%
- (WM) Wonder – 93.3%
- (BH) Maroon – 93.2%
- (WM) Fox – 92.1%
- (BH) Bronze – 92.1%
- (BH) Blue – 91.9%
- (BH) Lilac – 91.9%
- (BH) Gold – 91.1%
- (WM) Pearson – 90.9%
- (BH) Ruby – 90.6%
- (BH) Coral – 90.6%
- (WM) Goldberg – 90.5%

Childcare Support Expansion 2024 – Information from LBWF

As we prepare for the commencement of the first phase of the childcare expansion on 1st April, we have received enquiries from parents and carers regarding their eligibility, how to secure their place, and understanding how government's free childcare expansion works as well as information on childcare provider charges.

To address these queries effectively, we have developed a comprehensive FAQ page dedicated to providing support for families navigating the Free Childcare Expansion. You can access the FAQ page at [Childcare Support Expansion 2024](#)



[thehub.walthamforest.gov.uk]

The Education and Childcare Network for Waltham Forest

[thehub.walthamforest.gov.uk]thehub.walthamforest.gov.uk Follow us @TheHubWF

Privacy Notice: Lime Trust takes the privacy of pupils/parents data very seriously, therefore we would just like to remind parents that you can view/read our privacy notices on the [Trust](#) website.

Learning @ BH – Blue Class

The highlight of Blue Class's half term has been hydrotherapy at Ravensbourne School. We have had a brilliant time splashing about! We have all improved our water confidence and now all of us can float with assistance.

We have been working on our literacy skills with phonics bingo. One of our phonics sounds was 'l' so we did some lifting and looking in the classroom. We have also worked on the difference between upper- and lower-case letters.

In our Preparing for Adulthood lessons, we have continued learning to clean and make beds, as well as working on developing our understanding of hygiene.

We have enjoyed working with the VR headsets, we have taken trips round supermarkets and toured a harbour and an airport to explore different work settings.

It has been a lovely half term, and we wish you all happy holidays!

Jo Bardsley



Learning @ WM- Goldberg Class

Humanities: Stone Age

Goldberg class have been learning about Stone Age this half term. They have learnt how people began to make things out of stone and how things changed when people started making things with metal. Goldberg class also reflected quite a bit on how life must have been difficult for the prehistoric people. They also reflected on how fortunate they are to be living in the 21st century.



Most recently the learners have used clay to make things from Stone Age. Such as tools and pots.



Coffee Morning @ BH

You are invited!

We will be having regular coffee mornings/afternoons at Brookfield House.

This will be a chance to get to know other parents and some of the staff at Brookfield House.

We will be inviting speakers from outside agencies to have a chat as well.

25 April, Thursday morning: 9-10 am: Amanda from SENDIASS and Stephanie Earle of Waltham Forest Council's health check team will be joining us to talk about their services.

23 May, Thursday morning: 9-10 am: Carol from the Waltham Forest Parents Forum will be joining us.

27 June Thursday morning: 9-10 am

Please do get in touch if you have anyone in mind you would like to hear from at a coffee morning.

Please confirm your attendance by email or by calling the school office, please also get in touch with me if there is any speaker or group you would particularly like to hear from.

Thank you.

Joanne Bardsley-Mitchell

joanne.bardsley-mitchell@limetrust.org



Privacy Notice: Lime Trust takes the privacy of pupils/parents data very seriously, therefore we would just like to remind parents that you can view/read our privacy notices on the [Trust](#) website.



WALTHAM FOREST HOLIDAY ACTIVITY AND FOOD PROGRAMME

EASTER 2024

2 APRIL - 12 APRIL

ARE YOU AGED BETWEEN 5-16 AND IN RECEIPT OF BENEFIT-RELATED FREE SCHOOL MEALS?

This Easter we have the opportunity for you to try a wide range of free activities, have fun, make friends and enjoy a free meal every day across the borough.

To book your place and find out more scan here:



or visit

WALTHAMFOREST.GOV.UK/HOLIDAYS

Booking is essential on all activities so book early to avoid disappointment

For queries please contact the Waltham Forest Holiday Activity Programme team on:

WFHOLIDAYACTIVITYPROGRAMME@WALTHAMFOREST.GOV.UK



Privacy Notice: Lime Trust takes the privacy of pupils/parents data very seriously, therefore we would just like to remind parents that you can view/read our privacy notices on the [Trust](#) website.



Scan Me!
For more information.



active future
**HAF EASTER
PROGRAMME**

Active Future are working with Waltham Forest Council to bring a fun and exciting Easter activity club for children on benefits related Free School Meals for FREE. With activities on our programme such as nerf battles, dodgeball, healthy eating workshops and other fun team building Activities with a nutritious hot lunch - all delivered by our caring and expert staff! *Free for children on benefits related to Free School Meals. We can also cater for those not on FSM for £25 per session. Family discounts are also available! For children aged 5 - 11. Contact us for paid places

WHEN

2nd April - 5th April
9.00am - 1.00pm

WHERE

The Parish Church of
Ss Peter and Paul
The Green Walk,
Chingford, London,
E4 7EN



TO BOOK YOUR PLACE



Scan Me!



afwestessex@activefuture.info



07438276128

Privacy Notice: Lime Trust takes the privacy of pupils/parents data very seriously, therefore we would just like to remind parents that you can view/read our privacy notices on the [Trust](#) website.