

## Message from the Head teacher:

It was fantastic to welcome the learners back, and after a busy first week back at school, it is great to see how they have settled back into their routine.

Extra-curricular activities have been a highlight for learners, including educational visits and through activities in school. This includes forest school visits, swimming lessons, dance classes and attendance at ELHAP. All these allow for learning to take place in different settings whilst boosting learners' confidence, developing social skills, as well as the generalisation of skills.

Our family support workers have been liaising with local providers and have discovered several out of school opportunities for learners to be part of when at home with parents/carers.

Please see attached for further details of activities available.

Kind regards

Laura Blatter

Assistant Headteacher

## SCHOOL CALENDAR



7<sup>th</sup> March World Book Day

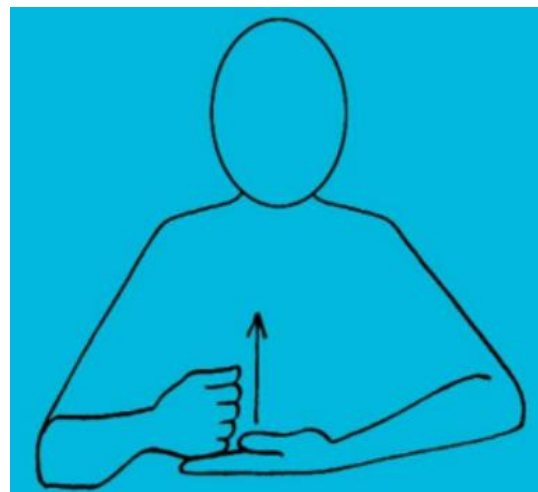
12<sup>th</sup> March Parents Evening

27<sup>th</sup> March Last day of Term

15<sup>th</sup> April Return to school

## Makaton -Sign of the Week -Help

This week's Makaton Sign is: [Help](#)



## Parents' Evening 12<sup>th</sup> March

We will be having Parents' Evening on **12<sup>th</sup> March 2024**. Please log onto your learners Arbor account to book time with their teacher. Alternatively give us a call and we can book a convenient time for you. We look forward to seeing you all at school.

**Privacy Notice:** Lime Trust takes the privacy of pupils/parents data very seriously, therefore we would just like to remind parents that you can view/read our privacy notices on the [Trust](#) website.

## This Week's Top Attendance

### Whole School Attendance

(Average this year)

**86.7%**

### Attendance Congratulations

*Classes with above 90% attendance*

(WM) Charles – 97.4%

(WM) Fotheringham – 94.6%

(WM) Mandela – 94.5%

(WM) Capaldi - £93.9%

(WM) Adepitan – 93.9%

(BH) Maroon – 93.6%

(WM) Wonder – 93.3%

(BH) Gold – 92.1%

(BH) Ruby – 92.0%

(WM) Fox – 91.9%

(BH) Blue – 91.7%

(BH) Bronze – 90.8%

(BH) Coral – 90.6%

(BH) Lilac – 90.5%

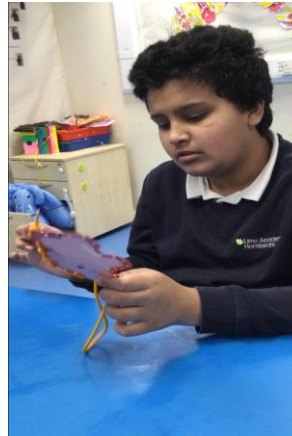
(WM) Goldberg – 90.5%

(WM) Pearson – 90.3%

(WM) Reeve – 90.0%

## Learning @ BH – Ruby Class

This week in Ruby class we have enjoyed being introduced to the new themes and sensory stories for each of the topics. We really enjoyed our performance art story of 'The little blue truck'. This week we have been focusing on the animals in the story and working on our fine motor skills while threading the different animals.



## World Book Day – 7<sup>th</sup> March

World Book Day will be held on Thursday 7<sup>th</sup> March, all Learners are invited to attend dressed as their favourite book character.

### Book Character Day



We also enjoyed our cooking sessions. We looked at making a mess and exploring the different textures and tastes whilst making our nachos.

**Privacy Notice:** Lime Trust takes the privacy of pupils/parents data very seriously, therefore we would just like to remind parents that you can view/read our privacy notices on the [Trust](#) website.

---

## Learning @ WM – Boseman Class

This week at WMS, selected students have been taking part in sexual health outreach workshops to have an opportunity to learn about and discuss a range of topics relevant to their development and age. So far, they have taken part in sessions about consent and appropriate language, to further their understanding of the impact their actions may have and how this translates into the wider community. Learners have been fully engaged in the sessions and look forward to taking part in the remaining sessions.



---

## Coffee Morning @ BH

You are invited!

We will be having regular coffee mornings/afternoons at Brookfield House.

This will be a chance to get to know other parents and some of the staff at Brookfield House.

We will be inviting speakers from outside agencies to have a chat as well.

The dates are:

**12 March, Tuesday afternoon: 3 pm until the end of parents' evening**

**25 April, Thursday morning: 9-10 am**

**23 May, Thursday morning: 9-10 am**

**27 June Thursday morning: 9-10 am**

Please confirm your attendance by email or by calling the school office, please also get in touch with me if there is any speaker or group you would particularly like to hear from.

Thank you.

Joanne Bardsley-Mitchell

[joanne.bardsley-mitchell@limetrust.org](mailto:joanne.bardsley-mitchell@limetrust.org)



**Privacy Notice:** Lime Trust takes the privacy of pupils/parents data very seriously, therefore we would just like to remind parents that you can view/read our privacy notices on the [Trust](#) website.

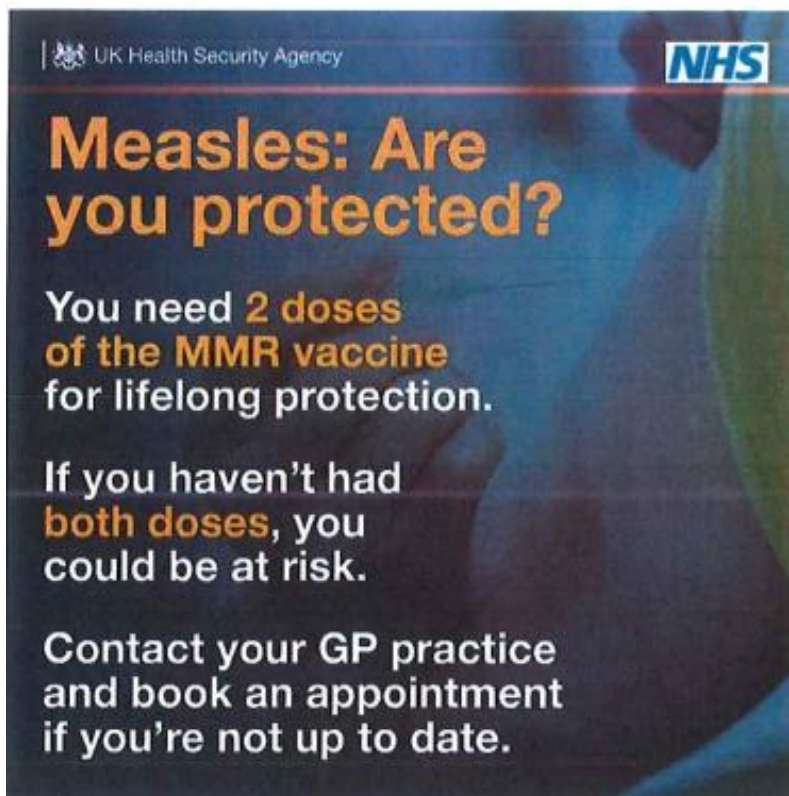
## INFORMATION FROM NHS

Measles cases are rising in the UK, and it is likely that there will be outbreaks across London. There have already been large outbreaks of measles in North West London and the West Midlands in 2023. Measles is highly infectious – one case of measles can infect 90% of unvaccinated close contacts (this includes those they share a classroom with). It can also be a really serious illness: for every five children who get measles, one will require a hospital visit; for every fifteen children who get measles, one will be affected by life-limiting conditions, such as blindness, meningitis and sepsis.

**The safest and most effective way to protect yourself, the children you care for and your community against measles is to make sure that you and your children are up to date with MMR vaccinations.** Two doses of the MMR vaccine provide 99% protection against measles. It is never too late to get your MMR vaccination and you can check whether you or your children are up to date with your vaccinations by contacting your GP or by looking in your child's red book. If you haven't been fully vaccinated (two doses of MMR) then you can get vaccinated at your GP practice. Secondary school-aged children can also get vaccinated at weekend clinics run by Vaccination UK (book by emailing [walthamforest@v-uk.co.uk](mailto:walthamforest@v-uk.co.uk) or calling [\(+44\) 01462 427 008](tel:+44201462427008)). Halal MMR vaccinations are available and can be requested when you make an appointment.

For more information about measles and the MMR vaccine see below:

- [www.nhs.uk/conditions/measles/](http://www.nhs.uk/conditions/measles/)
- [www.nhs.uk/conditions/vaccinations/mmr-vaccine/](http://www.nhs.uk/conditions/vaccinations/mmr-vaccine/)



**Privacy Notice:** Lime Trust takes the privacy of pupils/parents data very seriously, therefore we would just like to remind parents that you can view/read our privacy notices on the [Trust](#) website.



# SEND FOOTBALL

SIBLINGS WELCOME

National Lottery funded



SATURDAYS-TERM TIME

**2-3PM**

5-25 Years Old

Venue

Wadham Lodge

11 Kitchener Road, London E17 4JP

Admission **£3**

Booking essential via website

More info 07528 433640

[www.walthamforestparentforum.com/shop](http://www.walthamforestparentforum.com/shop)

Privacy Notice: Lime Trust takes the privacy of pupils/parents data very seriously, therefore we would just like to remind parents that you can view/read our privacy notices on the [Trust](#) website.



## SEND trampolining on Saturdays

**Status:**

Ongoing

**Next up:**

25 November 2023

**How often:**

Every Saturday

**Time:**

8:30am to 9:30am

**Location:**

Waltham Forest Feel Good Centre, 170 Chingford Road, Walthamstow, E17 5AA.

**Cost:**

Paid, booking required.

**Filed under:**

Family fun

[Book a place today!](#)

Suitable for children who are 11 and under.

2 sessions:

Saturday morning, from 8:30 to 9:30am

Tuesday afternoon, from 5pm to 6pm

£9 per child (including one free adult)

---

**Privacy Notice:** Lime Trust takes the privacy of pupils/parents data very seriously, therefore we would just like to remind parents that you can view/read our privacy notices on the [Trust](#) website.