

Message from the Head teacher:

Dear Hornbeam Families and Staff,

I hope this newsletter finds you well and refreshed after a restful half-term break. As we step into the second half of the spring term, it's wonderful to embrace the changing season, with longer days and the promise of warmer weather ahead.

Spring has a way of infusing us with optimism, and at Hornbeam, we are eager to harness that positive energy to enhance the learning experience for our exceptional students. One exciting initiative that has taken root during this break is the development of an in-house café at our William Morris Campus, that will provide learning opportunities for learners across Hornbeam.

By supporting our learners in running the café, we aim to foster a range of essential life skills, from communication and teamwork to food preparation, practical maths and money-handling. This project aligns with our commitment to creating a holistic educational environment that prepares our students for the challenges and joys of the world beyond Hornbeam.

In the spirit of spring and growth, we are also exploring opportunities to further develop our outdoor spaces and horticulture areas. The coming months will see us nurturing not only young minds but also the gardens that enrich our school environment.

I look forward to sharing more updates on these exciting projects and witnessing the positive impact they have on our Hornbeam family. Let's make the most of the brighter days ahead, together.

Wishing you all a fantastic start to the second half of the term!

Warm regards,

George Lambrou

Deputy Headteacher

SCHOOL CALENDAR



12th March Parents Evening

27th March Last day of Term

Makaton -Sign of the Week -Tidy Up

This week's Makaton Sign is: [Tidy Up](#)



Tidy up

Privacy Notice: Lime Trust takes the privacy of pupils/parents data very seriously, therefore we would just like to remind parents that you can view/read our privacy notices on the [Trust](#) website.

This Week's Top Attendance

Whole School Attendance

(Average this year)

86.7%

Attendance Congratulations

Classes with above 90% attendance

(WM) Charles – 97.4%

(WM) Fotheringham – 94.6%

(WM) Mandela – 94.5%

(WM) Capaldi - 93.9%

(WM) Adepitan – 93.9%

(BH) Maroon – 93.6%

(WM) Wonder – 93.3%

(BH) Gold – 92.1%

(BH) Ruby – 92.0%

(WM) Fox – 91.9%

(BH) Blue – 91.7%

(BH) Bronze – 90.8%

(BH) Coral – 90.6%

(BH) Lilac – 90.5%

(WM) Goldberg – 90.5%

(WM) Pearson – 90.3%

(WM) Reeve – 90.0%

Parents Evening – 12th March

We will be having Parents Evening on **12th March 2024**. Please log onto your learners Arbor account to book time with their teacher. Alternatively give us a call and we can book a convenient time for you. We look forward to seeing you all at school.

Learning @ BH – Navy Class

The topic for art this half term is body painting. To introduce our learners to this topic we did a simple activity that involved making different coloured handprints.

Some of Navy class are perfectly comfortable having paint put on their skin, while others are still getting used to the sensation. To accommodate those who do not enjoy it, they were given gloves to wear.



This allowed them to participate in the same way as their peers with different sensory preferences.



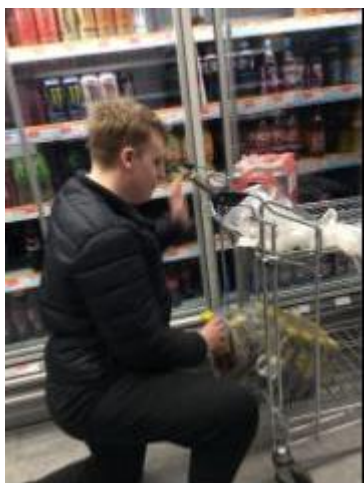
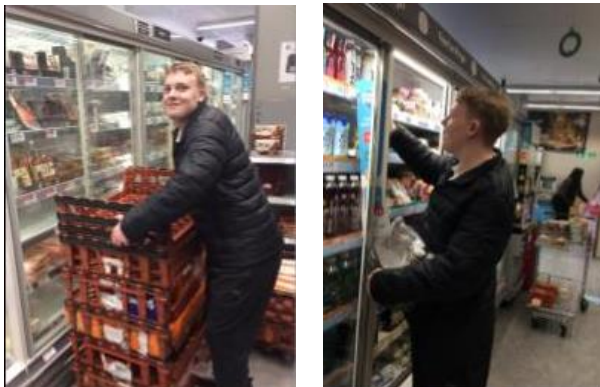
We will expand on this later in the week with a second art session where the pupils will make caterpillars with their handprints.

Privacy Notice: Lime Trust takes the privacy of pupils/parents data very seriously, therefore we would just like to remind parents that you can view/read our privacy notices on the [Trust](#) website.

Learning @ WM – Grandin Class

Grandin Work Experience at the Co-op

One of the students in Grandin class has been completing his work experience at the Co-op and has gained some valuable skills. He has learnt important health and safety rules; how to keep a straight back and bend his knees when lifting, replenishing stock, facing up the products and checking dates on items.



He works with another student and interacts well with other Co-op team members, building on his communication and team working skills. These will look great on his CV!

Valentine celebrations @ WM

William Morris celebrated Valentines Day with a cake Bake and Disco on 9th February raising a fantastic sum of £380.00.



A Massive Thank you to everyone that came along and supported the event.

Privacy Notice: Lime Trust takes the privacy of pupils/parents data very seriously, therefore we would just like to remind parents that you can view/read our privacy notices on the [Trust](#) website.

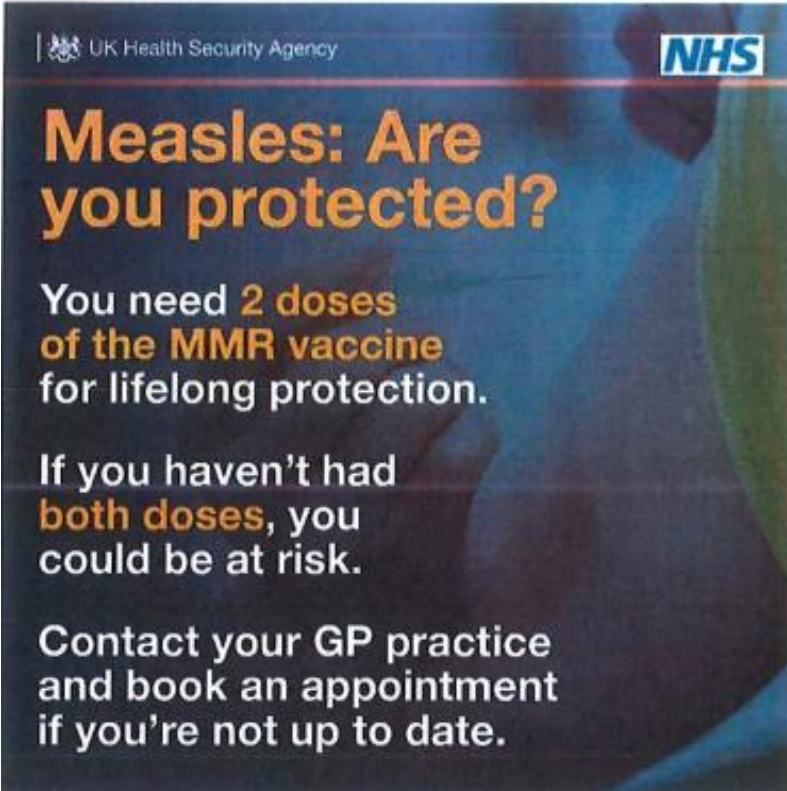
INFORMATION FROM NHS

Measles cases are rising in the UK, and it is likely that there will be outbreaks across London. There have already been large outbreaks of measles in North West London and the West Midlands in 2023. Measles is highly infectious – one case of measles can infect 90% of unvaccinated close contacts (this includes those they share a classroom with). It can also be a really serious illness: for every five children who get measles, one will require a hospital visit; for every fifteen children who get measles, one will be affected by life-limiting conditions, such as blindness, meningitis and sepsis.

The safest and most effective way to protect yourself, the children you care for and your community against measles is to make sure that you and your children are up to date with MMR vaccinations. Two doses of the MMR vaccine provide 99% protection against measles. It is never too late to get your MMR vaccination and you can check whether you or your children are up to date with your vaccinations by contacting your GP or by looking in your child's red book. If you haven't been fully vaccinated (two doses of MMR) then you can get vaccinated at your GP practice. Secondary school-aged children can also get vaccinated at weekend clinics run by Vaccination UK (book by emailing walthamforest@v-uk.co.uk or calling [\(+44\) 01462 427 008](tel:+44201462427008)). Halal MMR vaccinations are available and can be requested when you make an appointment.

For more information about measles and the MMR vaccine see below:

- www.nhs.uk/conditions/measles/
- www.nhs.uk/conditions/vaccinations/mmr-vaccine/



UK Health Security Agency

NHS

Measles: Are you protected?

You need **2 doses** of the **MMR vaccine** for lifelong protection.

If you haven't had **both doses**, you could be at risk.

Contact your GP practice and book an appointment if you're not up to date.

Privacy Notice: Lime Trust takes the privacy of pupils/parents data very seriously, therefore we would just like to remind parents that you can view/read our privacy notices on the [Trust](#) website.

ONLINE PARENT/CARER DROP-INS

**ARE YOU A PARENT/CARER IN WALTHAM FOREST?
IS YOUR CHILD AGED 3-18?**

Seek advice from our family practitioners on any of the following topics:

- Explore safeguarding and risks
- Explore the fundamentals to relationship building with your child
- Explore the benefits of positive discipline methods
- Gain and build parenting confidence
- Build a support network and meet other parents to create new friendships



**ATTEND WHEN ITS
CONVENIENT FOR YOU**

**DROP IN ANYTIME
BETWEEN
1 - 3PM
FRIDAY 23 FEBRUARY**

**TO BOOK A PLACE
EMAIL**

**gemma.akinade@
walthamforest.gov.uk**

OR TEXT: 07586713368

**strengthening
families
strengthening
communities**

**Race
Equality
Foundation**

**WALTHAM FOREST
FAMILY HUBS
WELLBEING, CONNECTION, SUPPORT**


Waltham Forest

Privacy Notice: Lime Trust takes the privacy of pupils/parents data very seriously, therefore we would just like to remind parents that you can view/read our privacy notices on the [Trust](#) website.