

Message from the Head teacher:

Dear Parents and Carers

I would like to take this opportunity to wish all parents/carers a safe and happy Christmas. It has been a busy time at Lime Academy Hornbeam with a lot of events happening throughout the term. As you know, we had a visit from OFSTED in early December, once the report is published in the New Year it will be shared with all parents/carers.

Sadly, we do have to say goodbye to some colleagues who will be leaving us at the end of term. I would like to thank all staff who are leaving us and wish them all the best for the future.

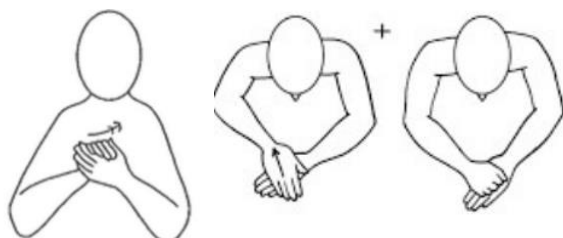
A special thanks to Stephen Chatterjee who is moving on to a promoted post in another SEN setting. I would like to thank Stephen for everything he has achieved at Hornbeam, especially at BFH and wish him every success for the future.

We will be returning on Monday January 8th Jan.

Happy New Year

Makaton -Sign of the Week - Happy Christmas

This week's Makaton Sign is: [Happy Christmas](#)



SCHOOL CALENDAR



21 December	Last day of Autumn term
22nd December 3rd January 24	Christmas Holiday
4-5 th January 24	Inset day (closed to students)
08 January 24	Students return to school

This Week's Top Attendance

Whole School Attendance

(Average this year)

86.6%

Attendance Congratulations

Classes with above 90% attendance

- (WM) Charles – 97.8%
- (WM) Mandela – 94.5%
- (BH) Maroon – 93.5%
- (WM) Fotheringham – 93.5%
- (WM) Wonder – 93.0%
- (WM) Capaldi – 92.8%
- (BH) Gold – 92.6%
- (BH) Blue – 92.6%
- (WM) Adepitan – 92.5%
- (WM) Fox – 92.2%
- (BH) Ruby – 91.8%
- (BH) Bronze – 91.5%
- (WM) Goldberg – 90.2%
- (WM) Reeve – 90.1%

Privacy Notice: Lime Trust takes the privacy of pupils/parents data very seriously, therefore we would just like to remind parents that you can view/read our privacy notices on the [Trust](#) website.

Goodbye from Stephen Chatterjee

Dear Parents & Carers,

As some of you may already know I will be leaving Lime Academy Hornbeam to take on a new role in January. I wanted to take this opportunity to thank you all for your support during my time here. It has been a pleasure to work with the children and young people here over the past two and a half years and I feel privileged to have been a part of their school journey. Supporting the learners here has given me so many incredible opportunities and memories that I will cherish and take with me, and I would like to wish them and all of you the very best for the future.

Steve Chatterjee

Assistant Headteacher



Learning @BH – Purple Class

We had loads of fun at the Sensory Science experience. A lovely scientist came into school and showed us all these cool experiments. We got to hold bubbles, watch explosions, and see massive smokey rings.



We have also been very busy creating our wares for the school fair and decorating our classroom to feel like Christmas. Together we shared resources, took turns and made colour choices.



What an awesome team!

Privacy Notice: Lime Trust takes the privacy of pupils/parents data very seriously, therefore we would just like to remind parents that you can view/read our privacy notices on the [Trust](#) website.

Learning @ WM – Angelou Class



Angelou class have had a great term, enjoying lots of creative activities in preparation for the festive celebrations. Learners have made pasta Christmas trees in their RE lessons, Space sky catchers in Science and a Stickman backdrop in their reading corner for English. They have also enjoyed The Drama huts – Christmas Elf workshop as well as the Science dome that visited the school.



Season's greetings!

Sending every one best wishes and a very happy holiday...

Angelou class



Privacy Notice: Lime Trust takes the privacy of pupils/parents data very seriously, therefore we would just like to remind parents that you can view/read our privacy notices on the [Trust](#) website.



LONDON FUTURES EMPLOYABILITY PROGRAMME



Are you aged 18-30 with a learning disability/disability looking for employment?

Do you want to play sports and have 1-1 mentoring with trained Coach Mentors?

Join us from the 17th of January 2024

Sessions will take place 16:30-18:00 on Wednesday's
at In2Sports Canary Wharf, 40 Harbord Square, London E14
9QH

Nearest station: Canary Wharf (Jubilee Line)



For more info please contact
Ryan Jones
ryanjones@changefdn.org.uk
07824 589517

Charity no. 1046047

Privacy Notice: Lime Trust takes the privacy of pupils/parents data very seriously, therefore we would just like to remind parents that you can view/read our privacy notices on the [Trust](#) website.