

## Message from the Head teacher:

Each week new activities are happening for all learners across Hornbeam. Today learners from Brookfield House are going into the Forest to experience Forest School.

Learners at William Morris participated in a football tournament on Tuesday and came second. Well done to all.

Please don't forget to follow us on twitter as we try to increase our social media presence.

Some exciting news is that in conjunction with the Local Authority we have secured a sensory pod for each site.....more details to follow.

Hope you all have a great week.

Sean Egan

Headteacher

## Makaton -Sign of the Week -Tidy-up



This week's Makaton Sign is: [Tidy Up](#)

## SCHOOL CALENDAR



5 <sup>th</sup> December	Parents Evening
21 December	Last day of Autumn term
25 <sup>th</sup> Dec- 3Jan 24	Christmas Holiday
4-5 <sup>th</sup> January 24	Inset day (closed to students)
08 January 24	Students return to school

## This Week's Top Attendance

### Whole School Attendance

(Average this year)

**85.8%**

### Attendance Congratulations

*Classes with above 90% attendance*

- (WM) Charles – 97.1%
- (WM) Mandela – 96.3%
- (BH) Blue – 95.8%
- (WM) Goldberg – 96.0%
- (WM) Fotheringham – 94.7%
- (BH) Maroon – 94.6%
- (BH) Bronze – 93.7%
- (BH) Gold – 92.7%
- (WM) Wonder – 92.4%
- (WM) Goldberg – 92.3%
- (WM) Capaldi – 90.9%
- (WM) Fox – 90.6%
- (BH) Coral – 90.6%
- (BH) Ruby – 90.5%
- (WM) Reeve – 90.5%

**Privacy Notice:** Lime Trust takes the privacy of pupils/parents data very seriously, therefore we would just like to remind parents that you can view/read our privacy notices on the [Trust](#) website.

---

## Learning @BH – Orange Class

This week in Orange class we have been exploring remembrance day. The children really enjoyed exploring the poppy sensory themed tuff tray with poppies represented in different ways. We also viewed poppies in the field on the screen with soft calming music, allowing us a space for relaxing and being mindful. The children also participated in an activity making large poppies which we can make into a wreath which to be laid on behalf of orange class at the remembrance service on Sunday for the community to see.

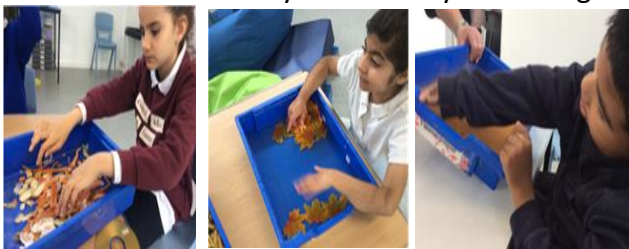


The children have enjoyed their time investigating the red poppy in different ways which has created a lot of smiles and vocalisations.

---

## Learning @ BH – Coral Class

Coral class have been enjoying learning about Autumn and the harvest. Coral class have had the experiences with many different textures and have all been very brave to try new things.



We made leaf people from our sensory story 'By the light of the harvest moon' and used our senses to explore cinnamon.

Amazing Coral learners!

---

## Sparkle Day @ BH

Brookfield House school had lots of fun celebrating Sparkle Day. A day to dress up and collect donations for our PTA school Party. Great fun was had by all classes.



---

## New City College Open Events dates.



Good afternoon

As our new academic year has begun, we are preparing for post 16 students with EHCPs and high needs.

Please see the attached dates for our most recent open events via the link below.

[Open Events | New City College \(nclondon.ac.uk\)](https://www.nclondon.ac.uk)

**Privacy Notice:** Lime Trust takes the privacy of pupils/parents data very seriously, therefore we would just like to remind parents that you can view/read our privacy notices on the [Trust](#) website.

---

## Learning at WM- Capaldi Class

Capaldi class went to Lesnes Abbey Wood on a fossil hunting trip, part of our science learning about rocks and soil. Lesnes Abbey has its very own fossil pit which dates back to the Eocene era and is 55 million years old. We were able to find seashells, small fossils and a few shark teeth. The wood grows on what many millions of years ago was the bottom of the Blackheath Sea. Big shout out to Kai who meticulously sieved through a lot of soil today and found 6 shark teeth which he proudly took home.



Everyone enjoyed themselves. On our way back we crossed the Thames on the Woolwich ferry, we saw a rainbow, we admired the DLR trains and London's amazing skyline.



**Privacy Notice:** Lime Trust takes the privacy of pupils/parents data very seriously, therefore we would just like to remind parents that you can view/read our privacy notices on the [Trust](#) website.

---

## Learning @ WM – Fox Class

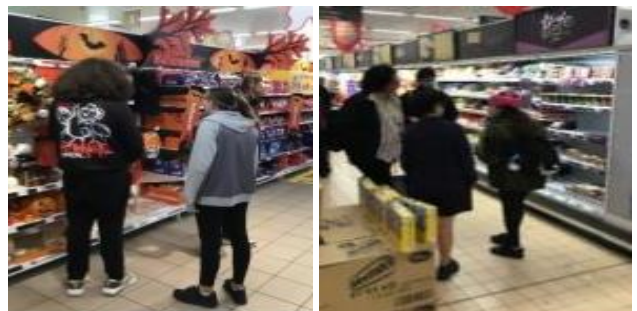
Fox Class created some pieces of art resembling fireworks in preparation for upcoming Bonfire Night. We explored the history behind the event, by looking at Guy Fawkes and the “Gunpowder Plot” which ultimately gave birth to the tradition.



---

## Learning @ WM – Mandela Class

Mandela Class returned to the community this year. In the first half-term, the class went to Sainsbury's on a weekly basis to practise money skills and social skills in public. We used public transport to go to Walthamstow on Wednesday mornings.



The class was also doing a lot of work about Black History month in October.



We learned about the Maasai Tribe in Kenya and created a few tribal shields, masks and jewellery to celebrate the traditions of people of African origin.

## Black History Month @ WM

Here are just a few of the amazing pictures from the Black History Month Exhibition at William Morris Campus.



**Privacy Notice:** Lime Trust takes the privacy of pupils/parents data very seriously, therefore we would just like to remind parents that you can view/read our privacy notices on the [Trust](#) website.

### SPEECH AND LANGUAGE THERAPY AT HORNBEAM ACADEMY

#### Our Team

Our team consists of Speech and Language Therapists (SaLT) registered with the Health and Care Professions Council (HCPC) supported by a Speech and Language Therapy assistant (SLTA), working across William Morris school and Brookfield House school.

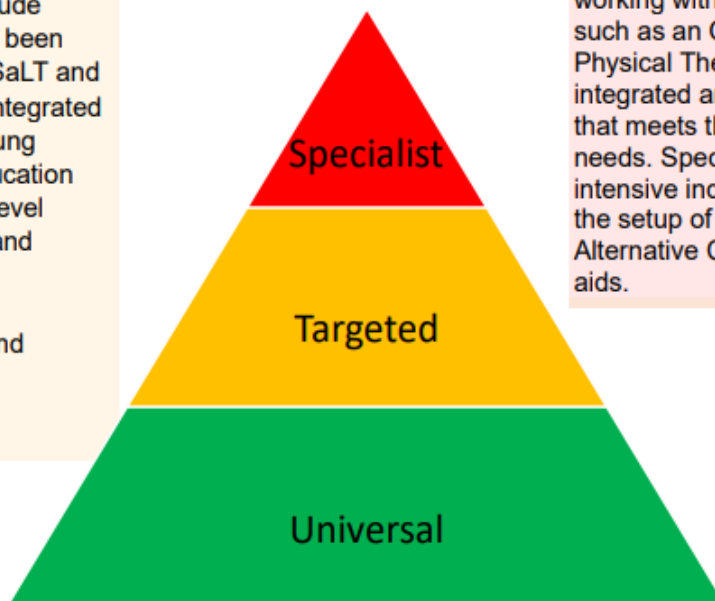
- Hanin Zaboura: Speech and Language Therapist
- Nafeesa Khan: Speech and Language Therapy assistant.

#### How we work

The speech and language therapy service at Waltham Forest NHS provides evidence-based support for children and young people with speech, language, and communication needs (SLCN) attending Hornbeam Academy.

We operate in special schools while referring to the Balanced System which is an outcomes-based framework that supports in delivering outcomes through an integrated approach to children and young people in school. This framework is offered in a three-level tiered approach:

**Targeted Support** include interventions that have been recommended by the SaLT and can be implemented/ integrated within the child and young person's setting by education staff. Provision at this level might include training and modelling of specific recommended targets, monitoring progress, and training education staff implementing therapy programmes.



**Specialist Support** may involve working with a multidisciplinary team, such as an Occupational Therapist or Physical Therapist, to develop an integrated and holistic treatment plan that meets the individual's unique needs. Specialist support can include intensive individual therapy to support the setup of Augmentative and Alternative Communication (AAC) aids.

**Universal Support** can include activities such as training teachers and parents on effective communication strategies, creating a language-rich environment, and promoting positive communication practices throughout the school or community.

**Privacy Notice:** Lime Trust takes the privacy of pupils/parents data very seriously, therefore we would just like to remind parents that you can view/read our privacy notices on the [Trust](#) website.

Contact us Parents and carers can reach the speech and language therapy team through any of the means below. The SALT team might not always be able to reply and reach out immediately, but we will aim to do so as soon as possible.

Email: [SaltHornbeam@limetrust.org](mailto:SaltHornbeam@limetrust.org)

Teacher referral – speak to your teachers immediately about your concerns and request that they reach out to the SALT team.

School reception – Ask school receptionists about the SALT team and we will aim to get back to you within a week from receiving your message.

Telephone call – Call William Morris school on a Wednesday or Thursday and if we are available reception will put you through) – if unable to answer we will aim to get back to you within a week.

**Privacy Notice:** Lime Trust takes the privacy of pupils/parents data very seriously, therefore we would just like to remind parents that you can view/read our privacy notices on the [Trust](#) website.