

## from the Headteacher

Dear Parents and Carers,

I would like to thank parents/carers who this week attended the PSHE/RSE consultation. This was a really important piece of work to see how we can support our pupils going forward. We will be sharing the updated policy and ask parents/carers to please read and if they need any further information, please contact us at the school.

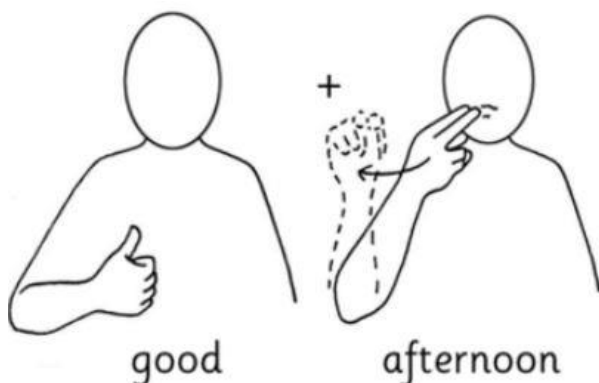
This week has been another busy week. At William Morris site the London Symphony Orchestra visited and worked with some of our pupils and this will be followed up by a visit to perform at the World-Famous Barbican. Pupils also celebrated World Ocean Day which raised awareness of marine conservation by holding a whole school fair. Pupils from Brookfield House had the opportunity to visit a Hydrotherapy pool this week and a lot of exciting events will be happening throughout the summer.

Have a great weekend.

Sean Egan

Headteacher

## Makaton Sign For The Week



This week sign is – To Sleep ([Makaton for 'Good Afternoon' – YouTube](#))

## School Calendar



<b>21 July</b>	Last day of school year
<b>1 September</b>	Inset day
<b>4 September</b>	Students return to school

## Family Support – Letter Request

Dear Parent/Carer

If you request support letters for immigration, benefits, housing etc, you will need to give 2 weeks' notice. We are aware sometimes letters are needed in an emergency, and I will do my best to accommodate such requests.

Kind Regards

Katrina Muir

## The Autism Show – London



The Autism Show, the national event for autism, in association with the National Autistic Society. The Autism Show is the largest event in the country dedicated to the autism community. We offer over 100 hours of talks, clinics and workshops, plus hundreds of specialist products and services. A visit to The Autism Show can make an immediate difference to you, and those you care, support or teach.

[Website - London Autism Show](#)

**Privacy Notice:** Lime Trust takes the privacy of pupils/parents data very seriously, therefore we would just like to remind parents that you can view/read our privacy notices on the [Trust](#) website.

---

## Learning @BH – Navy Class

We welcomed our students in Navy Class while embracing our new Cross-Curricular approach to learning in Brookfield House. All of our students really enjoyed the shift from subject based learning to a more holistic approach around four main areas: "My Thinking, My Creativity, Me and my Body and Me and my Community".

Using our main topic around Space and Planets this week we have covered everything from Sensory Play learning about the rocky Mercury to making Rocket



Pizzas during Cooking while also delivering Sensory Stories on "Whatever Next" and "Who sank the boat".

We all had a lot of fun and worked on a lot of skills and we cannot wait to keep building on such an amazing start!

---

## Learning @WM – Darwin Class

Darwin class are currently hosting a very eggciting event. The Hornbeam chicks have been with us since Monday and they hatched on Wednesday. We have



nine adorable and fluffy chicks. We are using our observational skills to learn about their needs and



development and we are exploring topics like diet types (we established the chickens are omnivores) food chains, PSHE topics like responsibility and caring for animals and many more.

### Chicken Jokes:

*What sound does a negative rooster make?*

Cock a doodle don't.

*Why did everyone laugh at the chicken?*

She was a real comedihen.

We might have another update next week on this.

Have a lovely weekend.

**Privacy Notice:** Lime Trust takes the privacy of pupils/parents data very seriously, therefore we would just like to remind parents that you can view/read our privacy notices on the [Trust](#) website.

## Online Safety

OmeTV is the APP which parents should be aware of as many teenagers start using it. Let's keep the young people safe!

# What Parents & Carers Need to Know about OMETV

OmeTV is another app which encourages users to 'make friends from all around the world'. People can search profiles by age and gender and send direct messages or photos. However, the app is primarily used for video calls. When using this feature, users are connected at random, although only their country of origin is shared. People can then either choose to move on to the next chat or can stay in that call for as long as they wish.

### WHAT ARE THE RISKS?

#### STRANGER DANGER

While young people generally know not to share personal information with strangers, the safety of their home and the distance offered by technology can make them feel more relaxed and uninhibited. Combined with the fact that OmeTV provides a webcam function – and anonymity – it can be an easy way for groomers to gather information, ask to connect on other social media platforms, or potentially request intimate images.

#### EXPLICIT CONTENT

Unfortunately, there are a lot of users who use OmeTV's webcam feature to expose themselves. While users can swipe to the next call quickly, it's not something that can be filtered out completely – so young people could easily be exposed to highly inappropriate images.

#### REPORTING DIFFICULTIES

When video calling, the other person's username is often hidden and therefore they can't be blocked or reported. There is a 'Report Abuse' tab at the bottom of the video, but the speed with which calls can swipe past can make it difficult to use this system. There's also little evidence to suggest that offenders are dealt with appropriately (through warnings or account termination, for example).

#### AGE VERIFICATION 17+

Although the site states that users must be 18 or over, there's no way to verify this, and it's easy to use an existing Facebook account to log in, or for users to set up a fake account. To access OmeTV, users simply need to press a button confirming they're an adult, which means it's likely many users will claim to be much older than they are.

#### VIDEO RECORDING REC

When young people are chatting live on a webcam, they could be coaxed by others into doing things they don't feel comfortable doing, or persuaded that no harm can come from it. What they don't know is whether the other user is recording them. These videos could then be used to embarrass or blackmail them, or they could be kept by a potential online predator.

#### LIMITED PARENTAL CONTROLS No

OmeTV has very limited parental controls. There is a 'safe mode', but this is of little practical use given that explicit content isn't filtered out. While the site lists several rules and regulations, there are few apparent ways to enforce them or restrict what users can see or do.

## Advice for Parents & Carers

### FOLLOW AGE GUIDELINES

OmeTV has an age recommendation of 18 and over, which suggests the developers are aware that it may facilitate adult content. It's important to adhere to the age guidelines and try to restrict access to the app for younger users. If you find it on an under-18's device, talk to them about the potential risks and explain why they probably shouldn't be using it.

### DISCUSS THE DANGERS

Maintain communication with your child about online safety and empower them to protect themselves. Simply deleting an app from their device impacts their independence and can cause resentment. Instead, highlight news reports of predators exposing themselves to children on the Internet, and discuss what they should do if asked for explicit images.

### DISCOURAGE CHATS WITH STRANGERS

Remind your child of the dangers of talking to strangers online. The anonymity OmeTV offers, plus its webcam function, makes it an attractive place for groomers to network and create inappropriate content. Explain that your child may see something which upsets them – and that it's a crime for anyone to expose themselves to a young person online.

### ENABLE PARENTAL CONTROLS

Regardless of how responsible your child may be, it's essential to use parental controls on their device. It's easy for young people to get lured in by others, feeling they've built up a trusting friendship and being coaxed into doing things they wouldn't normally do. Ensure in-app purchases aren't enabled on their device, and emphasise that they can always talk to you about anything online that worries them.

### Meet Our Expert



Dr Claire Bull is an online safety consultant, educator and researcher who has developed and implemented anti-bullying and cyber safety policies for schools. She has written various academic papers and carried out research for the Australian government comparing internet use and sexting behaviour of young people in the UK, USA and Australia.



**National Online Safety**  
#WakeUpWednesday

Source: [https://www.nola.com/news/crime\\_police/man-exposes-himself-to-marrero-middle-school-students-in-online-chat-tv-station-reports/article\\_0106e00-030-5107\\_aced-6f627af128bb.html](https://www.nola.com/news/crime_police/man-exposes-himself-to-marrero-middle-school-students-in-online-chat-tv-station-reports/article_0106e00-030-5107_aced-6f627af128bb.html)  
<https://www.wtv.com/news/local-news/crime/indy-man-sentenced-to-15-years-for-owning-two-phones-with-nearly-2-900-files-of-children-being-casualty-abused/> | <https://ome.tv/rules/>

**Privacy Notice:** Lime Trust takes the privacy of pupils/parents data very seriously, therefore we would just like to remind parents that you can view/read our privacy notices on the [Trust](#) website.

## Community Information

# DASH dot DANCE

## SUMMER TERM 2023



DashDotDance's creative contemporary dance workshops are an accessible and welcoming space for disabled children, young people and their siblings to explore, create and dance together.

**Dates:** 24th April, 15th May, 5th & 19th June, 3rd July

**Cost:** £1.50 per session (free spaces available)

**Venue:** Leyton Children and Family Centre  
215 Queen's Road, Walthamstow, E17 8PJ

**JUNIOR DANCERS**  
(5 - 11 years)  
5.15 - 6.00pm

**SENIOR DANCERS**  
(12 - 21 years)  
6.15 - 7.00pm



To find out more and book please contact Vicki at [hello@dashdotdance.com](mailto:hello@dashdotdance.com) or call the children's centre on 0208 496 2442

Photographs © Rachel Cherry 2022 & John McDonald-Fulton for East London Dance 2017



**Privacy Notice:** Lime Trust takes the privacy of pupils/parents data very seriously, therefore we would just like to remind parents that you can view/read our privacy notices on the [Trust](#) website.