

Message from the Headteacher

Dear Parents and Carers,

I hope all parents/carers and families had a wonderful Easter Break, and, for those celebrating Eid over the weekend, Happy Eid Mubarak.

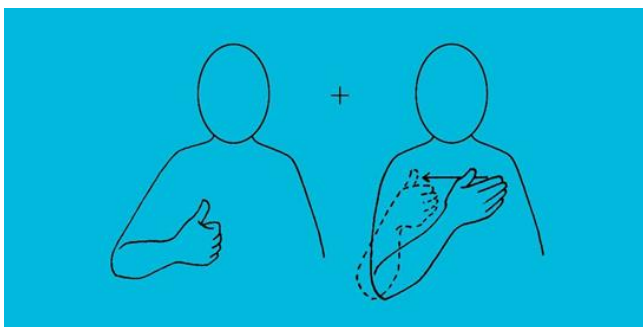
This week it was great to get into lessons and see all the amazing learning which is taking place. At Brookfield House, it was wonderful to see the astronaut training event which took place on Friday morning! Pictures to follow. At William Morris, many of our learners are keenly preparing for their upcoming Functional Skills exams.

I am looking forward to the Summer Term. Yet again, we have several exciting events and trips taking place, which will include our annual Sports Day.

Sean Egan

Headteacher

Makaton Sign For The Week



This week's sign is - *good morning* [[Makaton for 'Good Morning'](#) 🙌 - YouTube]

School Calendar

| | |
|-----------------------------|--|
| 27 April & 2 May | Teacher's Strike (School open to some students) |
| 1 May | Bank Holiday |
| 8 May | Bank Holiday – King's Coronation |
| 26 May | Last Day before Half Term |
| 29 May – 2 June | Half Term |
| 5 June | Students return to school |

Family Support – Letter Request

Dear Parent/Carer

If you request support letters for immigration, benefits, housing etc, you will need to give 2 weeks notice. We are aware sometimes letters are needed in an emergency, and I will do my best to accommodate such requests.

Kind Regards

Katrina Muir

Request For Assessment

Parent/Carer

If you require the Local Authority to undertake a statutory assessment. Please send your request to senteam@walthamforest.gov.uk. Further details of the EHC process can be found on the HUB at:

[Waltham Forest SEND Service. The Hub - Waltham Forest Education Hub.](#)

Privacy Notice: Lime Trust takes the privacy of pupils/parents data very seriously, therefore we would just like to remind parents that you can view/read our privacy notices on the [Trust](#) website.

Learning @BH – Purple Class

During Spring term, Purple class did their second in-house Enterprise placement and made Easter egg cupcakes. All students had individual roles and responsibilities. Purple class raised £19.00 for the Enterprise project, and the Easter eggs were sold across the school. Well-done to Purple class!



Counting how many cupcakes orders taken from all classes.



Putting prepared Easter egg cupcakes inside the box.



Counting Easter egg cupcakes with staff before placing inside the box.

Summer Term Dates @ BH

| | |
|-----------------------|---|
| April 21st | New Theme Launch Day - Astronaut School |
| April 28th | Eid celebration - Parents invited to join us for this event, more details to follow. |
| May 12th (tbc) | PTA After School Disco, more details to follow. |
| May 16th | 1pm-2pm - Speech and Language Parent Workshop - Creating Visual Supports |
| May 22nd | Cultural Diversity Day - Parents invited to join us for this event, more details to follow. |
| May 25th | Attendance Celebration Assembly |

PTA News

As Eid celebrations are taking place we'd like to use this opportunity to run our first PTA event, which will be a 'Curry in Hurry' chance for staff and parents to buy a homemade packed curry, rice and samosas.

Also, please 'Save the Date' for our Coronation Disco for the chance for kids and parents to come get their groove on and celebrate in royal style the coronation of King Charles 3rd. The disco is Friday 12th May. Please email hello@brookfieldassociation.org.uk if you would like to volunteer to help, have ideas on activities and party items e.g.: glow sticks etc.

Privacy Notice: Lime Trust takes the privacy of pupils/parents data very seriously, therefore we would just like to remind parents that you can view/read our privacy notices on the [Trust](#) website.

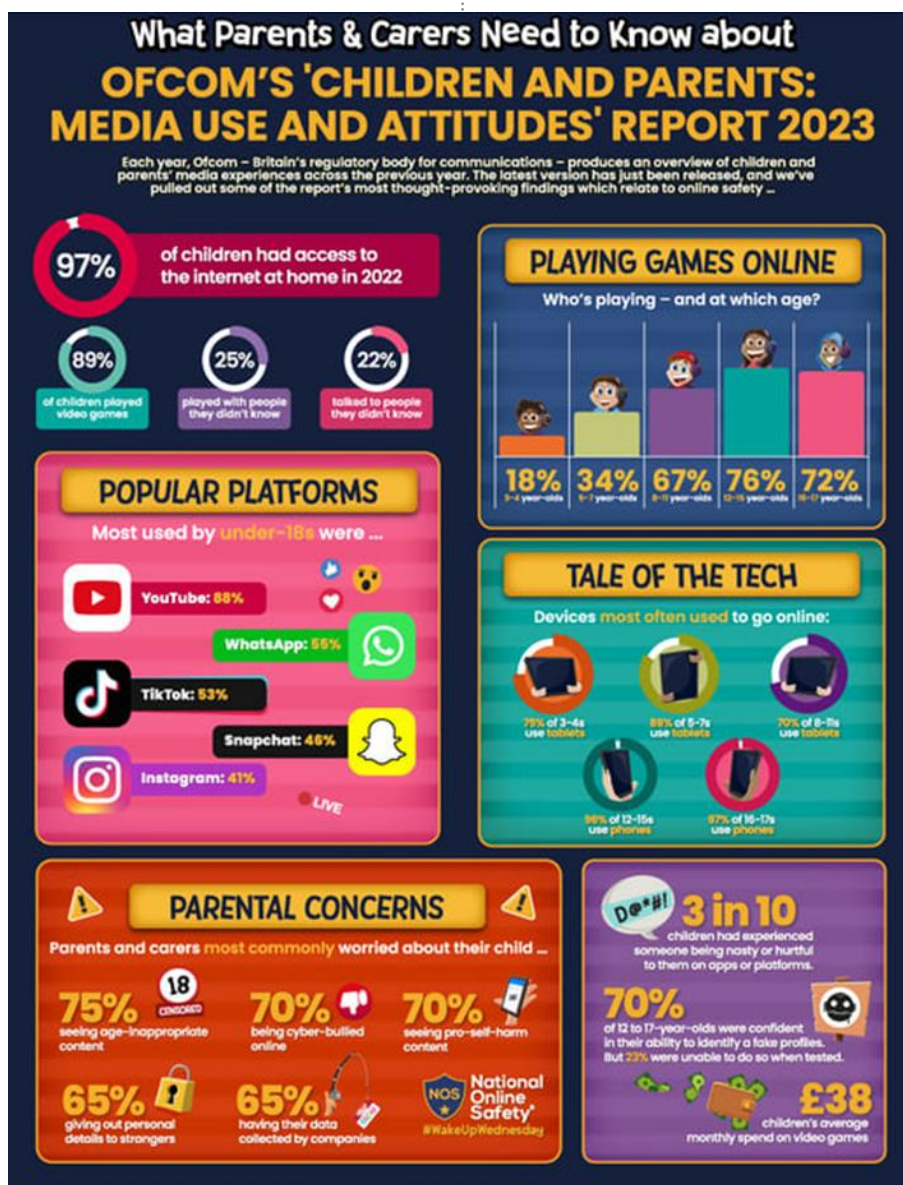
Online Safety

If you've ever worried about children seeing content online that's not appropriate for their age, becoming the victim of cyber-bullying or naively giving out personal information to strangers over the internet, then you're not alone. Those are three of the most common concerns for parents and carers in relation their child's digital activities.

In order to support our parents, Lime Academy Hornbeam have decided to increase parents' understanding of device usage, and young people's online spending patterns, to assist them in ensuring that their children's social media and digital device usage is safe.

Using our school's Facebook page and newsletter, we will share a lot of useful facts about popular platforms and online games, along with the advice about how to make sure your child's online activity is safe. Weekly. Enjoy reading!

This week we would like to share the data found in 'The Media and Attitudes' report.



Privacy Notice: Lime Trust takes the privacy of pupils/parents data very seriously, therefore we would just like to remind parents that you can view/read our privacy notices on the [Trust](#) website.

Community Information

From: Waltham Forest Parent Forum <walthamforestparentforum@live.co.uk>

Sent: Monday, April 17, 2023 5:43:07 PM

Subject: Forum updates

Hi everyone

Please find below some information about events which parent carers may be interested in. Please forward to families you work with

If you would like the forum to come and talk to your SEND families at a coffee morning or event, please get in touch.

Funding

A couple of pieces of news re funding

DfE funding has been agreed for the forum for 2023/24 so we can start to plan training events and activities this year.

EVENING GET TOGETHERS: We have received some additional funding from WF Community Chest for some evening events so that we can offer evening meals in local restaurants for parent/ carers- the funding has to be spent between now and the end of July and we plan to have 5 events per month(May, June, July). The events will be organised in age groups (as per the WhatsApp groups) so that you can get to meet parent/ carers with similarly aged children. Ideally it will be different people attending each event so that more members can access this, and each event will only be for one family member per event. Each event will be for 16 people so hopefully 240 people can make use of the opportunity. We have £15 per meal per person. The cost of anything over and above that amount will need to be shared amongst those attending. We will be organising the first events shortly and booking forms will go out to members. We don't know as yet whether more funding will be available beyond this timeframe.

Events

SEND TEAM FEEDBACK MEETING **EHCP Annual Review Feedback- THIS WEEK**

If you cannot attend please log your thoughts on our survey and we can feedback:

<https://www.surveymonkey.co.uk/r/BDFKJ99>

Thursday 20th April 7PM

[Click here to join the meeting](#)

If you need information about the EHCP Annual Review process this would also be a good way to get it from Annette.

Privacy Notice: Lime Trust takes the privacy of pupils/parents data very seriously, therefore we would just like to remind parents that you can view/read our privacy notices on the [Trust](#) website.

We also have a guide that we produced as part of work done on Annual Reviews. It can be accessed [here](#) or you can email us for a copy.

SEND TEAM Online Family Surgeries

Annette , from the SEND Team has agreed to run some family surgeries for anyone who would like to come along and discuss any issues they have with the SEND Team, EHCPs, Annual Reviews etc.

One is an open meeting and the other has closed appointment times which you can book (4 available). The plan is these meetings will run monthly

The open meeting is 25th April 11AM-12PM

Microsoft Teams meeting

Join on your computer, mobile app or room device

[Click here to join the meeting](#)

Closed Session

If you would like to book a closed session please let me know via email

([\[mailto:walthamforestparentforum@live.co.uk\]](mailto:walthamforestparentforum@live.co.uk))which]walthamforestparentforum@live.co.uk)whic
h time you would like and I'll send you the link.

There are 4 available times:

27th April 5PM-5.30PM

27th April 5.30PM-6PM

27th April 6PM-6.30PM

27th April 6.30PM-7PM

If we have too many, we'll have a waiting list.

SEND STRATEGY MEETINGS

At Waltham Forest Council, we are reviewing our strategy for supporting children and young people who have special educational needs and/or disabilities. We are doing this with our partners in health, education, and the Parent Forum.

The views, experiences and ideas of parents and carers are important in deciding what the priorities should be for the coming years. We are holding two online meetings open to all parents and carers of children and young people with SEND in the borough, to hear from you about what you think is important to include in our strategy.

The two meetings will be the same, so please attend the one that works best for you. Each meeting will start with a brief presentation about where the strategy review has got to so far and then there will be open discussion to get your feedback and suggestions. The meetings will be at the following times:

5:30pm-7:00pm 02/05/2023

or

11:00am-12:30pm 05/05/2023

Privacy Notice: Lime Trust takes the privacy of pupils/parents data very seriously, therefore we would just like to remind parents that you can view/read our privacy notices on the [Trust](#) website.

If you would like to attend, please complete the relevant form via the link . We will then send a link you can use to join the meeting

Meetings

2/5/23-5.30-7PM

<https://forms.gle/R7YQR8VuEfqXbh6j9>

5/5/23- 11AM-12.30PM

<https://forms.gle/twqha5wLZbXni3Mk7>

CAMHS MEETINGS

We have started to have meetings with the CAMHS team to share issues/questions parents have about the service and for CAMHS to highlight what they have done in light of those queries.

Minutes from the last meeting can be found [here](#)

The next meeting will be on Thursday 27th April 12PM-1.30PM online

The proposed agenda for that meeting will be:

Welcome & introductions

Waiting times/communication – you said/we did/next steps

ADHD diagnosis & post diagnostic support

Emotionally based school refusal

PDA

MHST/PCT school allocation

If your child/young person accesses CAMHS/MH services and you would like to attend, please let me know by email (walthamforestparentforum@live.co.uk) or text 07794 298496 with your name and 'CAMHS 27th' and then I will send the link to you

Forum Activities

FREE PILATES- followed by coffee and a sandwich at a local cafe

Wednesday 19th April 11AM

Wingrove Hall, Beech Hall Road Higham's Park E4 9NT.

There is a car park for those driving and the hall is very close to a 275 stop on Hale End Road

COFFEE & CHAT- Wednesday 26th April

99 Leyton Green Road E10 6DB

YOUNG CARERS will be attending to let parents know how children/young people can qualify for young carers services.

DADS' GROUP

Wednesday 19th April 6PM-8PM

Walthamstow Salvation Army (Jewel Road entrance)
434 Forest Road

Privacy Notice: Lime Trust takes the privacy of pupils/parents data very seriously, therefore we would just like to remind parents that you can view/read our privacy notices on the [Trust](#) website.

London E17 4PY

No need to book- just pop along to any of the events

SEND FOOTBALL

starts again this weekend 2-3PM at Wadham Lodge Sports Ground
11 Kitchener Road, London E17 4JP.

Dates up to the end of September are now available to book on the website-£3 per child per week

[Waltham Forest Parent Forum | Join Us Today | Shop](#)

NEURODIVERSITY SOCIAL CLUB- for ages 10-17

We are funding the Neurodiversity Social Club for the next 3 months at the Mill 7.15PM-8.45PM- parents must stay

Details and contact details can be found [here](#)

Soundcastle Family Music Sessions

The format of the family music sessions will change slightly for the next 3 sessions. We had discussed the idea with Gail about having a 'band' session which they trialled at the Fellowship Square event during autism acceptance week. As that worked well , one of the two sessions will be a 'band' session.

Each Saturday will have 2 sessions

1. Musical play for children who like to move, wriggle and explore. 10.30-11.30AM
Soundcastle Facilitators will guide the group through a range of musical play activities exploring musical instruments and vocal sounds.

2: Join the Band! A Structured Session for young people who like to sit or remain in one place (most of the time!), create and collaborate with others to make music. 11.45AM-12.45AM
Soundcastle Facilitators will lead the band through a series of creative activities exploring keyboards, iPads, drums and ukuleles. You can also bring your own instrument if you already play one!

If you would like to book please use the links below

29th April 10.30-11.30- Move, wriggle and explore

<https://forms.gle/akdbsU8KR45bYk6dA>

29th April 11.45AM-12.45PM- Join the Band!

<https://forms.gle/D9X2bLcbmhzk2YNb8>

Paradox Centre
Ching Way
Chingford E4 8YD

LEYTON FAMILY HUB YOUTH CLUB-STARTS WEDNESDAY THIS WEEK

QUEEN'S ROAD E17 8PJ

start this week and every Wednesday term time **19th April -12th July**

Privacy Notice: Lime Trust takes the privacy of pupils/parents data very seriously, therefore we would just like to remind parents that you can view/read our privacy notices on the [Trust](#) website.

4.15PM-6.30PM for ages 9-12
You must register your child beforehand

More details can be found [here](#)
Contact 020 8496 2442 jennifer.callcott@walthamforest.gov.uk to register your child or for more information

DASH DOT DANCE

Also at Leyton Family Hub Queen's Road E17 8PJ

Dates: 24th April, 15th May, 5th June, 19th June, 3rd July
Junior Dancers(5-11) 5.15PM-6PM Senior Dancers(12-21 years) 6.15PM-7PM
£1.50 per child/young person
To book or to find out more ring the Family Hub on 020 8496 2442 or email hello@dashdotdance.com

Facebook

Remember as a parent member, if you access Facebook, we have a number of closed chat pages which parent members can request to join. Please answer the joining questions so I can check everyone on the page is a member.

Waltham Forest Parent Forum Chat

<https://www.facebook.com/groups/309664266070571/>

Waltham Forest Parent Forum ADHD chat page

<https://www.facebook.com/groups/424632344843889/?ref=bookmarks>

WF Parent Forum 4Ds Chat (dyslexia, dyspraxia, dysgraphia, dyscalculia) |

[\(4\) WF Parent Forum 4Ds Chat\(dyslexia, dyspraxia,dysgraphia,dyscalculia\) | Facebook](#)

Waltham Forest Parent Forum Epilepsy Chat

[\(2\) Waltham Forest Parent Forum Epilepsy Chat | Facebook](#)

WF Parent Forum Profound Chat

[WF Parent Forum Profound Chat | Facebook](#)

Waltham Forest Parent Forum Preparing for Adulthood (PfA) Chat

[Waltham Forest Parent Forum Preparing for Adulthood \(PfA\)Chat | Facebook](#)

Waltham Forest Parent Forum Social Anxiety Chat

[Waltham Forest Parent Forum Social Anxiety Chat | Facebook](#)

Waltham Forest Parent Forum Cerebral Palsy Chat

[Waltham Forest Parent Forum Cerebral Palsy Chat | Facebook](#)

Join the Forum

Membership of the forum is free, and we do not ask anything of you unless you want to become involved in forum activities and consultations

www.walthamforestparentforum.com

Carol Prideaux

Parent Participation Director - Waltham Forest Parent Forum

07794 298496 (Carol) 07528 433640 (Sarah)

Privacy Notice: Lime Trust takes the privacy of pupils/parents data very seriously, therefore we would just like to remind parents that you can view/read our privacy notices on the [Trust](#) website.