

Message from the Headteacher

Dear Parents and Carers,

I hope you are well. We are coming to the end of January and the end of a very short half-term. The exact dates for the upcoming holiday are printed just to the right.

We continue to plan around the upcoming strike days, the first on Wednesday 1 February 2023. As always, we want to remain open for the pupils, if possible, but we have to be sure that the pupils are safe and well supported.

As we come to the end of this half term, I can tell you that we will be welcoming a number of new members of the teaching and support staff in the new term. We have been fortunate to employ three outstanding teachers, including a Food Technology teacher, all with experience in SEND and all enthusiastic about starting with us.

We have also appointed a SENCO who will assist us to ensure all EHCPs are up to date and that relevant targets continue to be set, evaluated and revised.

At William Morris we have appointed from within three Pathway Leads. This is a middle leadership position that provides Pastoral Support to students and families. The teaching Teams remain your first point of contact. The pathway Leads will provide support to the Teaching Teams.

The Pathway Leads are:

Everest: Matondo Mabu
matondo.mabu@limetrust.org

Fuji Explore: Nadege Soula
nadege.soula@limetrust.org

Fuji Challenge: Robert(Bob) Laflamme
robert.laflamme@limetrust.org

Thank you again for all your support.

Kind regards,

Craig Smillie

School Calendar

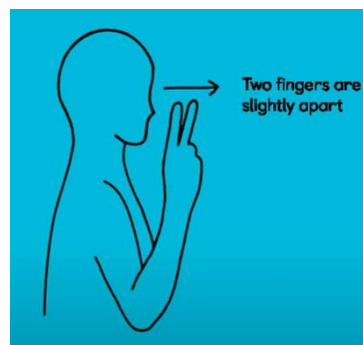


1 February	NEU Strike Day (School closed)
10 February	Inset Day (School closed)
13 to 17 February	Half Term (School closed)
20 February	Students Return To School
3 to 14 April	Easter Break (School closed)
17 April	Inset Day (School closed)
18 April	Students Return To School

Important Message from Assistance with Travel

For all our families accessing assistance with travel, please note renewal letters for the 23/24 academic year are being dispatched by assistance with travel next week so you should start to receive them in the post. Please ensure you respond by the **17th February 2023**, to secure assistance for your child/ren for the next academic year. If you need support with this, please speak with Katrina Muir (Family Support/Attendance Officer).

Makaton Sign For The Week



This week's Makaton sign is: to look

Privacy Notice: Lime Trust takes the privacy of pupils/parents data very seriously, therefore we would just like to remind parents that you can view/read our privacy notices on the [Trust](#) website.

Learning @ BFH – Green Class

This half term we have been exploring all aspects of Super Heroes. We have enjoyed reading our Super Duper You story and learning that even if we think we are normal we can enjoy different things and still be super. We have enjoyed our Art sessions where we



have been looking at choosing colours for our Pop Art. We have also enjoyed creating our own musical instruments to help us make our own Super Theme tunes. We have also alongside Coral Class had rebound therapy sessions that are very exciting. We have also looked at super healthy foods and making



smoothies. We have looked at cause and effect with switch activated toys, we enjoy this time as we get to



have a cheeky foot spa. Every member of our class is special, and we have been celebrating the uniqueness of each learner this term.

Learning @ WM – Boseman Class

ENERGY SAVING WEEK AT WMS!

This week the whole school have been learning about why saving energy is so important. In science learners looked at the effects of climate change, different seasons and the effects this has on our planet. In

PSHE, students have been learning about the actions we can take to prevent this by saving energy at home. They have also looked at how this can save money as well as the planet. After an insightful week of exploring this topic, WMS had an Energy Saving Exhibition in the hall where all students had an opportunity to showcase their amazing work from the past week. Here are some pictures of the Exhibition:



Learning @ WM - Darwin Class

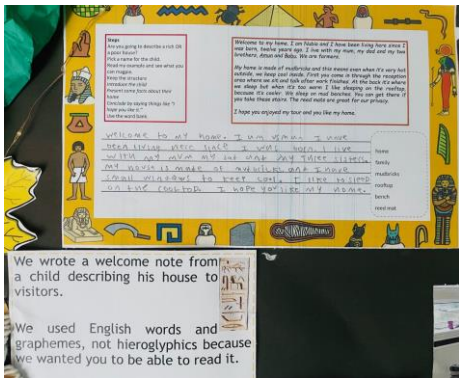
Literacy Display

We have been busy exploring facts about life in Ancient Egypt. This week we wrapped slices of apples



We looked into their daily life and their living conditions and made Egyptian homes out of clay.

Did you know their homes were made out of mudbricks? The exterior walls were plastered and whitewashed to reflect the sun and tiny windows helped keep houses cool and ventilated. Some homes even had vents on the roof to allow cool breezes to circulate through the house, a form of natural air conditioning. How SMART!



We wrote a welcome note from a child describing his house to visitors.

We used English words and graphemes, not hieroglyphics because we wanted you to be able to read it.

in gauze and covered them in salt to observe how mummification worked. We planted wheat and are



currently measuring how it grows, applying our knowledge of length measurements from last term.

Persistent Absence

Any pupil whose attendance falls to 90% is deemed by the Government as being a PA.

Schools are required to:

- Inform parents that their child's attendance is a concern, offer support & challenge where appropriate.

Where support is not taken up:

- Formal letters from school.
- Request for NPR (Notification of Parental Responsibility), SAP (School Attendance Panel), FPN (Fixed Penalty Notice).

Fines can be requested for:

- Ten unauthorised lates in six consecutive school weeks - Under the U code.
- Ten unauthorised absences in six consecutive school weeks – Under the O code.

Community Information

WALTHAM FOREST JOBS APPRENTICESHIP FAIR

NATIONAL APPRENTICESHIP WEEK™

Friday, 10 February 2023, 10am – 4pm

Walthamstow Library, High Street, London, E17 7JN

Apprenticeships offer the opportunity to learn new skills while gaining valuable experience in a wide number of industries. This is now your chance to discover how an apprenticeship can shape and develop your career.

This event will provide the chance to meet directly with apprenticeship recruiters, learn about new industries and opportunities. You will discover exactly what it means to be an apprentice and receive tips and help on getting the role you really want.

- Access a wide range of local apprenticeship opportunities.
- Get pre-employment support including CV development and application guidance.

Register today by visiting:
bit.ly/WFApprenticeshipFair
 or scanning the QR Code





Open Events @ New City College

Subject: Open Events NCC

Good Morning

We have some open evenings coming up and It would be great if you can share these to parents and carers.

Date	Time	Campus
Tuesday 7 February	4-7pm	Arbour Square, Ardleigh Green and Epping
Wednesday 8 February	4-7pm	Hackney, Havering Sixth Form and Tower Hamlets
Thursday 9 February	4-7pm	Rainham and Redbridge

The evening events tend to be a lot quieter, so are recommended for SEND to attend.

Our next Saturday open event is on the 4th of March 10am-2pm

<https://www.ncc london.ac.uk/open-events>- register here

The events give a great insight- to speak with the curriculum staff and discuss support needs and options.

Kind regards

Sarah Glover

Transitions Co-ordinator

EHCP and Supported learning

New City College: Redbridge, Epping and Havering

T: 020 8548 7102

Redbridge Campus, Little Heath, Barley Lane, RM6 4XT



Privacy Notice: Lime Trust takes the privacy of pupils/parents data very seriously, therefore we would just like to remind parents that you can view/read our privacy notices on the [Trust](#) website.